

# Can I Recycle This?

## YES

Cardboard, paper, plastic bottles, and cans.



Clean Paper & Cardboard

## NO

Plastic bags, food waste, glass, or Styrofoam™.



Coated Paper Containers



Empty Plastic Bottles & Jugs



Other Plastics & Styrofoam™



Empty Aluminum & Steel Cans



All Glass, Food & Yard Waste



**DO NOT**  
bag items!

**KEEP IT CLEAN!** All items  
must be free of food & liquids.

Questions? Call 801.298.6175 or visit [www.bountifulutah.gov](http://www.bountifulutah.gov)



*Did you know?*

**You should NOT put plastic bags in the recycling?**

*No, not even trash bags- any stretchy plastic jams up sorting equipment*



## Why can't I recycle my plastic bags?

When we pick up your recycling in one of our trucks, it is combined with other people's recycling and taken to a Materials Recovery Facility, or MRF. There the material is separated by type so it can be sent to manufacturers for reuse. A long assembly line of people and machines help sort out plastic bottles from aluminum cans, cardboard from paper. The process has a bunch of mechanical elements, and plastic bags quite literally get stuck in the gears and grind the process to a halt. Plastic bags and film are our MRF's #1 problem; several times a day, they have to completely stop their assembly line to pull plastic bags out of the machinery.

Grocery store plastic bags are the biggest culprit, but any stretchy plastic will cause the same problems. Besides trash bags, another repeat offender, this category includes sandwich bags, plastic wrap, produce bags, and quite a bit of packaging. If it's plastic and you can stretch it, it belongs in the trash. Remember: when in doubt, throw it out.

### How do I Reduce?

This one is easy- bring your own bags to the grocery store! If that sounds like too much forethought, just keep a couple of reusable bags in your car. They also make bags that fold up quite small for those of the purse-carrying persuasion. For extra credit, bring spare bags for produce, or simply don't bag fresh items individually. Tupperware can be used in place of Ziploc bags.

### How do I Reuse?

Zip-top bags can be washed out and reused for the same purpose. Grocery and other bags can be used to line small household trash cans, or to pick up after pets.

### How do I Recycle?

While plastic bags CANNOT go into your recycle bin, they can be recycled if processed separately. You can drop off your plastic bags to be recycled at any Walmart Supercenter, Lowes or Target. Find your nearest plastic bag recycler at <http://www.abagslife.com/find-a-recycle-center/>!

### But what about trash bags?

Please don't bag your recyclables! Recyclable materials are generally clean, so most people can get away with not lining their indoor bins and rinsing them out if they get dirty. If that's not possible for you, make sure to shake the recyclables out when you get to your outside container- put the trash bag in the trash where it belongs.





*Did you know?*

**You should NOT put dirty containers in your recycling?**

*The second largest contaminant in recycling is food waste! Please make sure to only toss clean and empty recyclables in your recycling bin!*







PLASTICS 101

# PLASTIC BOTTLES AND JUGS ONLY!

IF IN DOUBT, THROW IT OUT!



## METALS 101

# Aluminum and Tin cans only in your curbside recycling bin!

No scrap metal, car parts, other metals, or electronics!



### Common questions regarding metal cans:

1. Do I have to remove the label?

No!

2. Do I have to rinse the cans?

If you flip your can upside down, shake it and nothing comes out, you're good to go! As long as the can is empty and dry it is okay to be tossed in.

Recycling has been in the news a lot lately, especially when it comes to the foreign markets. Some people may post things about recycling being not valuable/a waste of time. Metals are definitely still valuable, more valuable than anything else that can go in the recycling bin (papers, cardboard, plastic)!





#### CARDBOARD RECYCLING 101

## Separate the cardboard from the plastic wrap!

Recycle the cardboard and toss the plastic wrap!

Questions? Call 801-363-9995 or email [recycle@acedisposal.com](mailto:recycle@acedisposal.com)



Did you know? When you try to recycle mixed materials such as cardboard inside plastic wrap or a newspaper still in its bag, it will end up at the landfill? Please remove the cardboard/newspaper from its plastic film—recycle the cardboard/newspaper and toss the plastic film!

### Common questions regarding mixed materials:

**1. Why can't they separate it at the materials recovery facility?**

At the MRF, the workers do not have enough time! They must work quickly to remove contamination on a fast-moving sort line. When they see plastic film of any kind, they have to take it out because it can damage the equipment.

**2. Do I have to remove the label from cans?**

No!

**3. Do I have to remove the plastic windows from envelopes?**

No! Paper recycling companies are ready to handle that small amount of plastic.

**4. Can I toss in aseptic cartons (soymilk/broth boxes), chip bags, or pet food bags?**

No! This will be the next recycling tip! Those containers are made from multiple materials that cannot be separated by hand, therefore not recyclable.





*Did you know?*

Egg cartons  
are accepted  
in your  
recycling bin!

However, the  
Styrofoam egg  
containers are not  
recyclable!



## Common questions regarding mixed materials:

**1. Why can't you take Styrofoam? It has the recycle symbol with a number on it!**

The recycling symbol on items does not mean that the item is recyclable! The recycling symbol is in the public domain; therefore, anyone can use it. When you see the chasing arrows with a number on plastic items, it is just telling you the type of plastic it is. And unfortunately, it is not recyclable.

Packing Styrofoam (but not packing peanuts) can be dropped off to be recycled at the following places: [Recycle Utah in Park City](#), [Marko Foam in Salt Lake City](#), and [ACH Foam Technologies in Murray](#).

**2. Can I recycle the plastic egg containers?**

No! The only acceptable plastics are in the form of bottles and jugs.



*Lid Closed!*

*Recycling 101*

# Keep your recyclables dry!

Make sure the lid on your bin is completely closed! Flatten and cut down any boxes that may cause the lid to not close all the way!



*Did you know?*

**You can take your string  
lights to most scrap metal  
recyclers!**

While string lights are not accepted in your home recycling bin, they can be recycled! Give your local scrap metal recycler a call to find out if they take them!





## Recycling 101

**\*Plain  
wrapping  
paper can be  
recycled!**

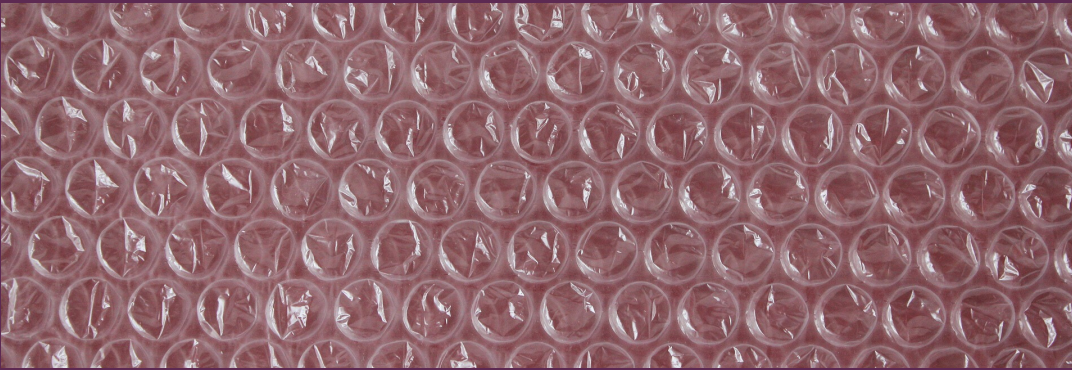
\*If your wrapping paper has glitter or foil, it CANNOT be recycled. Bows and ribbons do not belong in your recycling bin either, opt to reuse!



# Recycling Packing Materials During the Holidays!



Reuse or dispose of  
the Styrofoam  
packaging in the  
trash.



Take the bubble wrap  
or plastic film to your  
local grocery store  
with your plastic bags.



Flatten your  
cardboard box and  
place it in your  
recycling bin!



## Recycle Your Glass Containers!

*While glass is not acceptable in your curbside recycling bin, did you know that it can be taken to drop-off locations throughout the valley?*

**Visit [Utah.MomentumRecycling.com](http://Utah.MomentumRecycling.com) for a complete list of drop-off locations!**

**\*Empty glass containers only\* no ceramics, light bulbs, or mirrors.**



Did you know? Glass is 100% recyclable. When it is tossed in your recycling bin at home, it can break and harm workers at the sorting facilities. However, you can still recycle your glass containers by taking them to a drop-off location! The glass is processed and recycled here in Utah! For drop-off locations, please click here -> <https://bit.ly/36zfv8f> #RecycleRight

### Common questions regarding glass: \_\_\_\_\_

#### 1. Why can't glass go in my recycling bin?

It's because the recycling sorting facilities in Utah do not have the equipment to process glass.



# Recycling Tip!



## Keep Labels On!

You do not have to remove labels.  
Just make sure your cans and bottles  
are empty and dry!



We are often asked if labels need to be removed from bottles and cans—the answer is no! When it comes to your food cans and plastic bottles and jugs, the most important thing is to make sure that those items are clean, empty and dry. When containers that still contain food waste are tossed in recycling bins, they will contaminate otherwise clean recycling, sending more items to the landfill that could have been recycled.

---



# Wash your reusable bags!

Follow your bag's care instructions for proper care. Here are some general rules:

**If your bag is woven...**  
...machine or hand wash and line dry.

**If your bag is insulated...**  
...hand wash and line dry.

**If your bag is made out of cotton...**  
...machine wash and dry.



We often talk about making the switch from disposable to reusable bags, but we don't talk about how to care for reusable bags. Don't forget to wash them frequently! Follow the care instructions listed on your bag for the best guidelines. If your bag does not have care instructions, see below for some rule of thumbs. When in doubt, hand wash and line dry! <https://www.cleaninginstitute.org/cleaning-tips/clothes/fabric-care/cleaning-reusable-bags>



## Toss your tissues in the trash!

Tissues, toilet paper, and paper towels do not go in the recycling bin—they must be placed in the trash! The fibers that make up these items are too short to be recycled!

Wet wipes should be tossed in the trash as well—even if they claim they are flushable, they are not!



Office paper, junk mail, and magazines are all allowed in your recycling bin. However, the fibers that make up items like toilet paper, tissues, and paper towels are too short to be made into another product. Please recycle right and make sure you are tossing these products in the trash!





**No gloves or  
masks in the  
recycling bin!**

**PPE is not recyclable  
and must be disposed  
of in the trash.**

**Recycling Tip!**

# Recycling Tip!

Keep lids on  
your plastic  
bottles and  
jugs!



To leave on or throw out? That is the question! The lids of your bottles and jugs are made from a different plastic than the container it's on, this is why originally people were told to remove the lids. However, now there are more efficient ways for recyclers to separate the lids from the containers at the plastics recycling facility, **they can be left on**. But if you remove the lid and still toss it in the recycling bin, it will not be recycled! The lid by itself is too small to be captured to during the recycling sorting process.



HOUSEHOLD HAZARDOUS WASTE

No HHW in the  
trash or in the  
recycle bin!

Contact your local Health  
Department for drop-off locations!



Household Hazardous Waste (HHW) are electronics and products that contain toxic, flammable, or corrosive ingredients. While spring cleaning, make sure to dispose of these unwanted chemicals correctly by taking them to Veolia (<https://bit.ly/3gr4Cy3>) in North Salt Lake, and your electronics to the Bountiful Landfill. A small fee may apply. #RecycleRight

DID YOU KNOW?



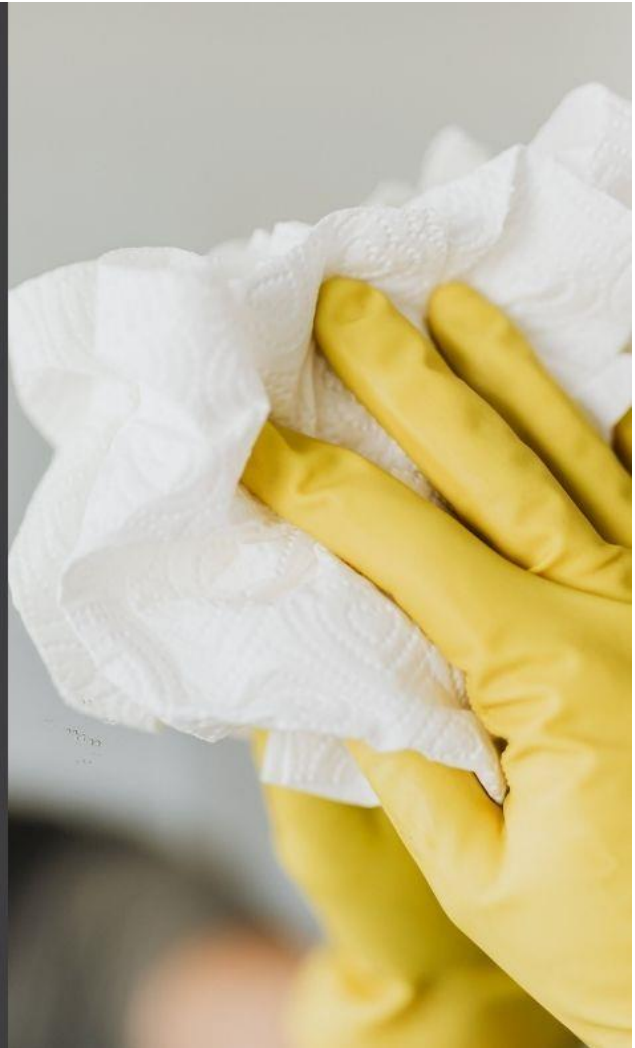
You don't have  
to rinse your  
recyclables!  
They just have  
to be empty!



DID YOU KNOW?

Tissues, paper towels, and napkins belong in the trash!

The fibers that make up these items are too small to be recycled!



The fibers that make up your single-use paper products are too small to be recycled, so please send these items to the landfill. You can reduce your waste by switching to reusable alternatives like cloth napkins and cleaning rags! #RecycleRight



While paper towels and toilet paper are not recyclable, their tubes/cores are! Make sure they're making it into your recycling bin! #RecycleRight

DID YOU KNOW?

Paper towel  
and toilet  
paper tubes  
are recyclable!



Candy wrappers are typically made from multiple materials, which makes them a hard to recycle. This Halloween, please make sure all your candy wrappers end up in the trash can, not the recycling bin!

RECYCLING TIP

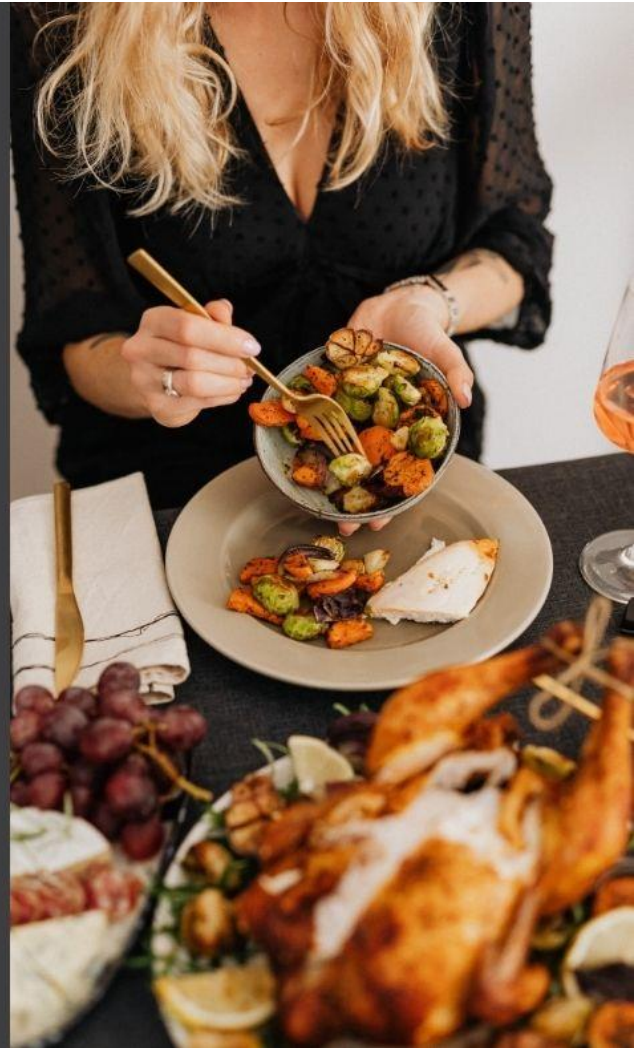
Candy wrappers  
belong in the  
trash--not the  
recycling bin!



DID YOU KNOW?



Household  
waste increases  
by 25% during  
the holiday  
season!





Reuse gift bags! Like wrapping paper, plain paper gift bags are recyclable if the handles are removed. However, why not reuse the bags instead! During the holidays we see more bags made of other types of materials, so I wanted to create a tip that focuses on reuse instead.



The graphic is a vertical rectangular panel with a dark grey background. At the top, there is a decorative green holly leaf and berry branch. Below it, the text "HOLIDAY RECYCLING TIPS" is written in a white, all-caps, sans-serif font. A decorative green lattice border separates this from the main title "Reuse gift bags!" which is in a large, white, serif font. Another decorative green lattice border follows. At the bottom is the logo for "BOUNTIFUL EST. 1847", featuring a stylized mountain range in blue and green above the text "BOUNTIFUL" in a bold, black, serif font, with "EST. 1847" in a smaller, blue, sans-serif font below it.

HOLIDAY RECYCLING TIPS

Reuse gift bags!

**BOUNTIFUL**  
EST. 1847



String lights are recyclable, but not in your recycling bin! They can be taken to a local metal recycler for recycling! String lights are recyclable, but not in your recycling bin! They can be taken to a local metal recycler for recycling!



HOLIDAY RECYCLING TIPS

Recycle string lights at your local metal recycler!



**BOUNTIFUL**  
EST. 1847

The graphic is a vertical rectangular panel with a dark grey background. At the top, there is a decorative green holly wreath. Below it, the text 'HOLIDAY RECYCLING TIPS' is written in a white, serif font. A decorative green lattice border separates this from the main message, 'Recycle string lights at your local metal recycler!', which is also in a white serif font. Another decorative green lattice border follows. At the bottom left is the Bountiful logo, which consists of a stylized mountain range with a blue sky and green hills, above the word 'BOUNTIFUL' in a bold, black, sans-serif font, and 'EST. 1847' in a smaller, blue, sans-serif font below it. The right side of the panel is a photograph of warm white string lights against a dark background, with some lights out of focus, creating a bokeh effect.

Recycle all cardboard boxes! But toss any bubble wrap/Styrofoam/pillows in the trash! Plain wrapping paper is recyclable! But if the wrapping paper has any glitter, foil, or other embellishments, it is not recyclable.



HOLIDAY RECYCLING TIPS

Recycle  
your boxes!



But toss the  
bubble wrap!





Plain wrapping paper is recyclable! But if the wrapping paper has any glitter, foil, or other embellishments, it is not recyclable.



HOLIDAY RECYCLING TIP

Plain wrapping paper is recyclable!

**BOUNTIFUL**  
EST. 1847

The graphic features a dark grey background on the left with a green holly wreath at the top. The text is centered in white. Below the text is a white box containing the Bountiful logo, which consists of a stylized mountain range in blue and green under a blue arch. To the right of the text box is a vertical strip of red wrapping paper with white cut-out patterns of a reindeer, a rabbit, and floral motifs. The text 'El Corte Inglés' is visible on the paper.

Bows and ribbons are not recyclable! I always suggest people to reuse their bows and ribbons if they can! But ribbons or bows, plastic or cloth, are not recyclable.



HOLIDAY RECYCLING TIP



Bows and ribbons do not belong in your recycling bin.

