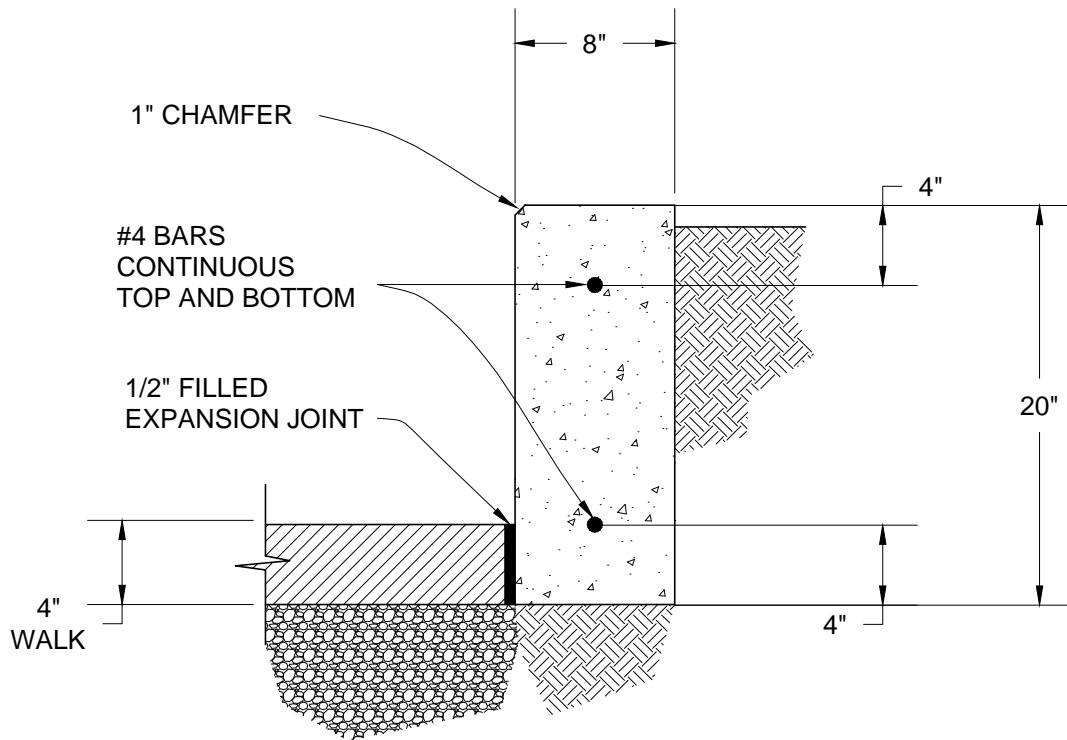


BOUNTIFUL STANDARD

20" REINFORCED CONCRETE RETAINING WALL

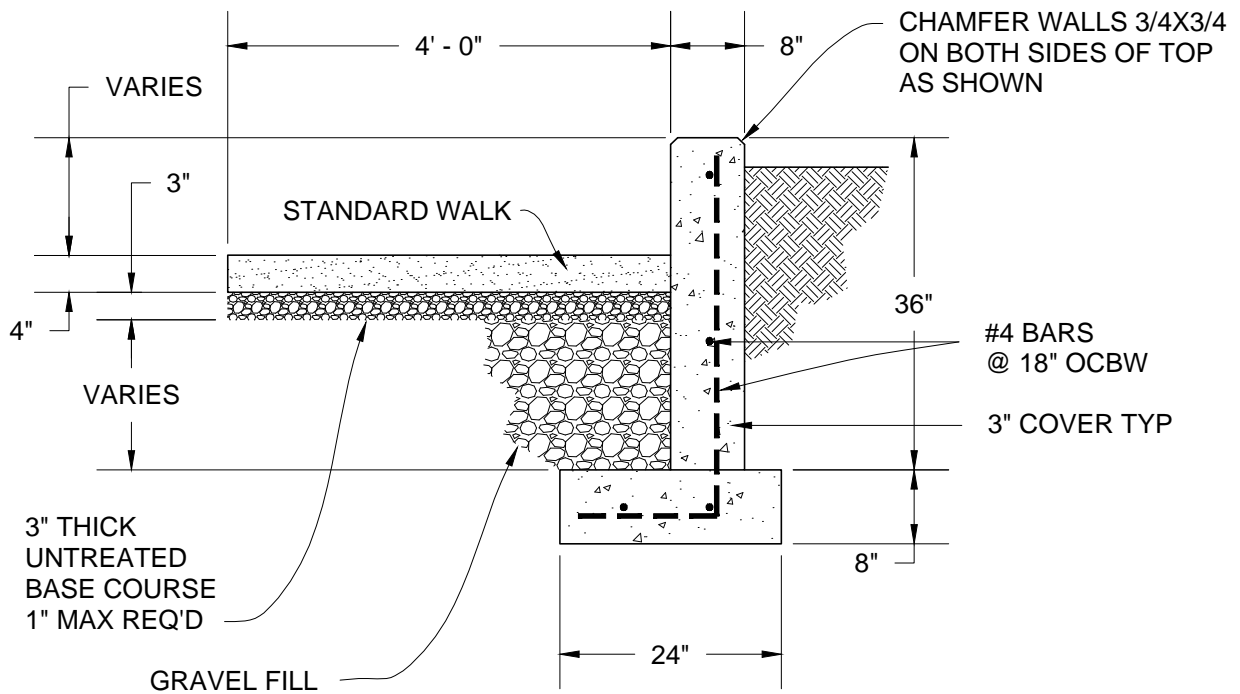


NOTE:

ALL EXPOSED CONCRETE SURFACE
TO HAVE RUBBED FINISH.

BOUNTIFUL STANDARD

36" REINFORCED CONCRETE RETAINING WALL



NOTES:

- 1 ALL EXPOSED CONCRETE TO HAVE RUBBED FINISH.
- 2 WALL TO CONTAIN 0.125 CUBIC YARDS OF CONCRETE PER FOOT AND 6.6 LBS OF REINFORCED STEEL PER FOOT.