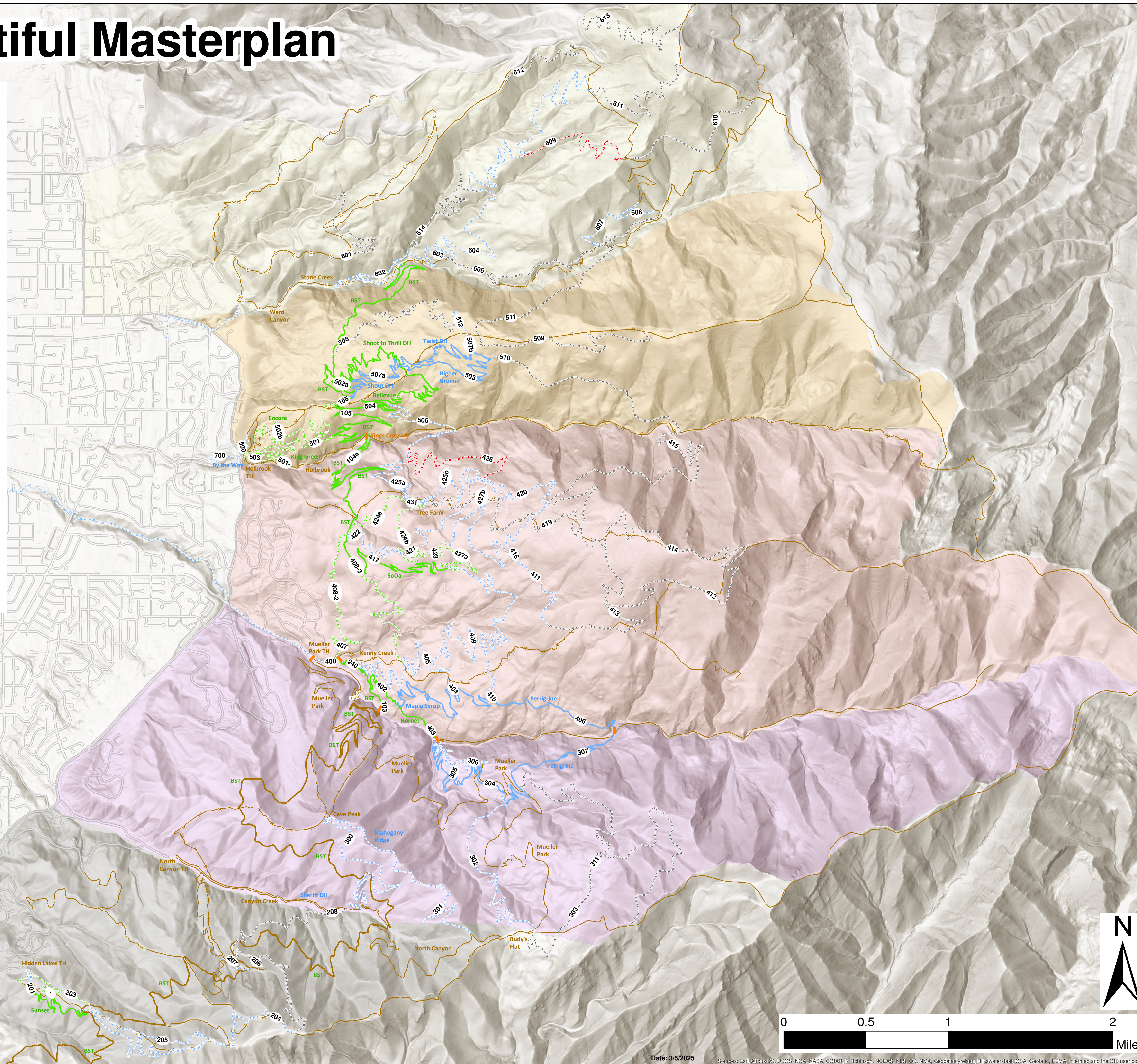


Bountiful Masterplan

Legend

- PROPOSED
- BRIDGE
- Bountiful TIP Trails**
- EASY (GREEN)
- INTERMEDIATE (BLUE)
- DIFFICULT (BLACK)
- EXPERT (DOUBLE BLACK)
- Existing Trails**
- Abandon
- ADOPT
- Extensive Maint.
- No Action
- Re-Route
- BST
- Areas**
- 1
- 2
- 3
- 4
- 5
- 6
- World Hillshade



COMPLETED TRAILS										
SEGMENT	Difficulty	TYPE	STYLE	DIRECTION	DESIGN	MANAGED	Len	MUF	Priority	
T_ID				ON	USE	USE				
105	GFN	SGL	TRD	BOTH	MULTI	MULTI	2.21	1a		
106	GFN	SGL	TRD	BOTH	MULTI	MULTI	1.63	1a		
201	GFN	SGL	TRD	BOTH	HIKBIK	HIKBIK	1.00	1a		
104a	GFN	SGL	TRD	BOTH	MULTI	MULTI	1.82	1a		
103	GFN	SGL	TRD	BOTH	HIKBIK	HIKBIK	0.24	1b		
240	GFN	SGL	TRD	BOTH	HIKBIK	HIKBIK	0.43	1b		
304	BLU	SGL	MBO	DOWN	BIK	HIKBIK	0.83	1b		
305	BLU	SGL	MBO	DOWN	MTB	BIK	1.50	1b		
307	BLU	SGL	TRD	BOTH	HIKBIK	HIKBIK	1.11	1b		
402	GFN	SGL	MBO	BOTH	MTB	HIKBIK	0.46	1b		
403	GFN	SGL	MBO	BOTH	MTB	HIKBIK	0.36	1b		
404	BLU	SGL	MBO	BOTH	MTB	HIKBIK	1.46	1b		
406	BLU	SGL	TRD	BOTH	HIKBIK	HIKBIK	1.57	1b		
504	GFN	SGL	MBO	BOTH	BIK	MTB	2.16	1c		
505	BLU	SGL	MBO	BOTH	BIK	MTB	1.35	1c		
502a	GFN	SGL	MBO	DOWN	BIK	MTB	1.67	1c		
507a	BLU	SGL	MBO	DOWN	BIK	MTB	1.46	1c		
507b	BLU	SGL	MBO	DOWN	BIK	MTB	1.22	1c		
417	GFN	SGL	TRD	BOTH	MTB	MULTI	1.41	2b		
104b	GFN	SGL	TRD	BOTH	MULTI	MULTI	0.44	2b		

OTHER MASTER PLANNED TRAILS										
SEGMENT	Difficulty	TYPE	STYLE	DIRECTION	DESIGN	MANAGED	Len	MUF	Priority	
T_ID				ON	USE	USE				
306	BLU	SGL	CLX	BOTH	HIK	HIK	1.13	1b		
400	BLU	SGL	MBO	DOWN	MTB	HIKBIK	0.21	1b		
300	BLU	SGL	MBO	BOTH	MTB	HIKBIK	2.16	1b		
301	BLU	SGL	MBO	BOTH	MTB	HIKBIK	2.00	1b		
700	BLU	SGL	MBO	BOTH	HIKBIK	HIK	0.36	1c		
405	BLU	SGL	TRD	BOTH	MULTI	MULTI	2.34	2a		
409	BLU	SGL	TRD	BOTH	HIKBIK	HIKBIK	3.37	2a		
501	GFN	SGL	MBO	BOTH	MTB	HIKBIK	1.33	2a		
502b	GFN	SGL	MBO	DOWN	BIK	BIK	1.70	2a		
425a	BLU	SGL	TRD	BOTH	HIKBIK	HIKBIK	1.03	2b_P		
425b	BLU	SGL	TRD	BOTH	HIKBIK	HIKBIK	1.04	2b_P		
427a	GFN	SGL	TRD	BOTH	MTB	MULTI	0.71	2b_P		
427b	BLU	SGL	TRD	BOTH	MTB	MTB	0.51	2b_P		
508	BLK	SGL	MBO	DOWN	BIK	MTB	1.68	2c		
512	BLU	SGL	MBO	DOWN	BIK	MTB	0.34	2c		
416	BLU	SGL	TRD	BOTH	MTB	MTB	1.57	3a		
420	BLU	SGL	MBO	DOWN	BIK	BIK	1.00	3a		
421	BLU	SGL	MBO	DOWN	BIK	BIK	1.08	3a		
422	BLU	SGL	JMP	DOWN	MTB	MTB	0.80	3a		
423	GFN	SGL	TRD	DOWN	MTB	MTB	0.61	3a		
426	DBL	BLK	SGL	PBO	DOWN	MTB	1.32	3a		
431	BLU	SGL	CLX	BOTH	HIK	HIK	0.07	3a		
506	BLU	SGL	TRD	BOTH	HIKBIK	HIKBIK	1.34	3a		
424a	GFN	SGL	TRD	DOWN	MTB	MTB	0.81	3a		
424b	GFN	SGL	TRD	DOWN	MTB	MTB	0.70	3a		
203	GFN	SGL	MBO	DOWN	MTB	HIKBIK	0.72	3b		
601	BLK	DBL	CLX	BOTH	MOTO	MOTO	1.20	3b		
-	GFN	SGL	TRD	BOTH	HIKBIK	HIKBIK	0.05	3b		
207	BLU	SGL	TRD	BOTH	MULTI	MULTI	0.23	3c		
208	BLK	SGL	TRD	BOTH	HIKBIK	HIKBIK	1.00	3c		
302	BLU	SGL	TRD	BOTH	HIKBIK	HIKBIK	1.69	3c		
303	BLK	SGL	PBO	BOTH	HIKBIK	HIKBIK	2.72	3c		
311	BLK	SGL	PBO	BOTH	HIKBIK	HIKBIK	1.78	3c		
410	BLU	SGL	TRD	BOTH	MULTI	MULTI	0.33	3c		
411	BLU	SGL	TRD	BOTH	HIKBIK	HIKBIK	0.66	3c		
412	BLK	SGL	PBO	BOTH	HIKBIK	HIKBIK	1.59	3c		
413	BLK	SGL	PBO	BOTH	HIKBIK	HIKBIK	1.52	3c		
414	BLK	SGL	CLX	BOTH	MULTI	MULTI	2.44	3c		
415	BLK	SGL	CLX	BOTH	MULTI	MULTI	2.11	3c		
419	BLK	SGL	CLX	BOTH	MULTI	MULTI	1.94	3c		
509	BLK	SGL	TRD	BOTH	HIK-HIK	HIKBIK	1.43	3c		
510	BLK	SGL	TRD	BOTH	HIKBIK	HIKBIK	1.43	3c		
511	BLK	SGL	TRD	BOTH	HIKBIK	HIKBIK	1.22	3c		
602	BLU	SGL	TRD	DOWN	HIKBIK	HIKBIK	0.79	3c		
603	BLU	SGL	TRD	DOWN	HIKBIK	HIKBIK	0.38	3c		
604	BLU	SGL	MBO	DOWN	MTB	HIKBIK	4.31	3c		
606	BLK	SGL	TRD	BOTH	HIKBIK	HIKBIK	1.24	3c		
607	BLU	SGL	TRD	DOWN	MOTO	MULTI	0.46	3c		
608	BLU	SGL	TRD	DOWN	MOTO	MULTI	0.39	3c		
609	DBL	BLK	SGL	PBO	DOWN	MTB	1.10	3c		
610	BLK	SGL	PBO	DOWN	MOTO	MULTI	1.10	3c		
611	BLK	SGL	MBO	BOTH	BIK	MULTI	1.39	3c		
612	BLK	SGL	CLX	BOTH	MOTO	MULTI	0.74	3c		
614	BLK	SGL		DOWN			1.41	3c		
202	BLU	SGL	CLX	BOTH	HIKED	HIK	0.18	4		
204	BLU	SGL	TRD	BOTH	MULTI	MULTI	2.12	4		
205	BLU	SGL	TRD	DOWN	MULTI	MULTI	1.23	4		
206	BLK	SGL	TRD	BOTH	HIKBIK	HIKBIK	1.39	4		
500	BLU	SGL	CLX	BOTH	HIK	HIK	0.28	4		
613	BLK	SGL	TRD	BOTH	BIK	HIKBIK	1.61	4		
619a	BLU	SGL	TRD	BOTH	MULTI	HIK	0.01	4		
619d	BLU	SGL	TRD	BOTH	MULTI	HIK	0.01	4		
619e	BLU	SGL	TRD	BOTH	MULTI	HIK	0.07	4		
619c	BLU	SGL	TRD	BOTH	MULTI	HIK	0.03	4		
619e	BLU	SGL	TRD	BOTH	MULTI	HIK	0.05	4		
619f	BLU	SGL	TRD	BOTH	MULTI	HIK	0.14	4		
619g	BLU	SGL	TRD	BOTH	MULTI	HIK	0.03	4		
619h	BLU	SGL	TRD	BOTH	MULTI	HIK	0.05	4		
407	GFN	SGL	TRD	DOWN	MTB	MTB	0.62	N/A		
408-2	GFN	SGL	TRD	DOWN	MTB	MTB	0.77	N/A		
408-3	GFN	SGL	TRD	BI	MULTI	MULTI	1.26	N/A		
501-	GFN	SGL		BOTH			0.08			
503	GFN	SGL	MBO	DOWN	BIK	BIK	0.45			
619h	BLU	SGL	TRD	BOTH	MULTI	HIK	0.05	4		
700	BLU	SGL	MBO	BOTH	HIKBIK	HIK	0.36	1c		

Date: 3/5/2025

Sources: Esri, Airbyte, USGS, NOAA, NASA, GOVAT, N, Robinson, NCEAS, NLS, US, NMA, Geodatasystem, Rijkswaterstaat, GSA, Geoland, FEMA, Intermap and the GIS user community