

Bountiful Masterplan

Legend

Bountiful TIP Trails

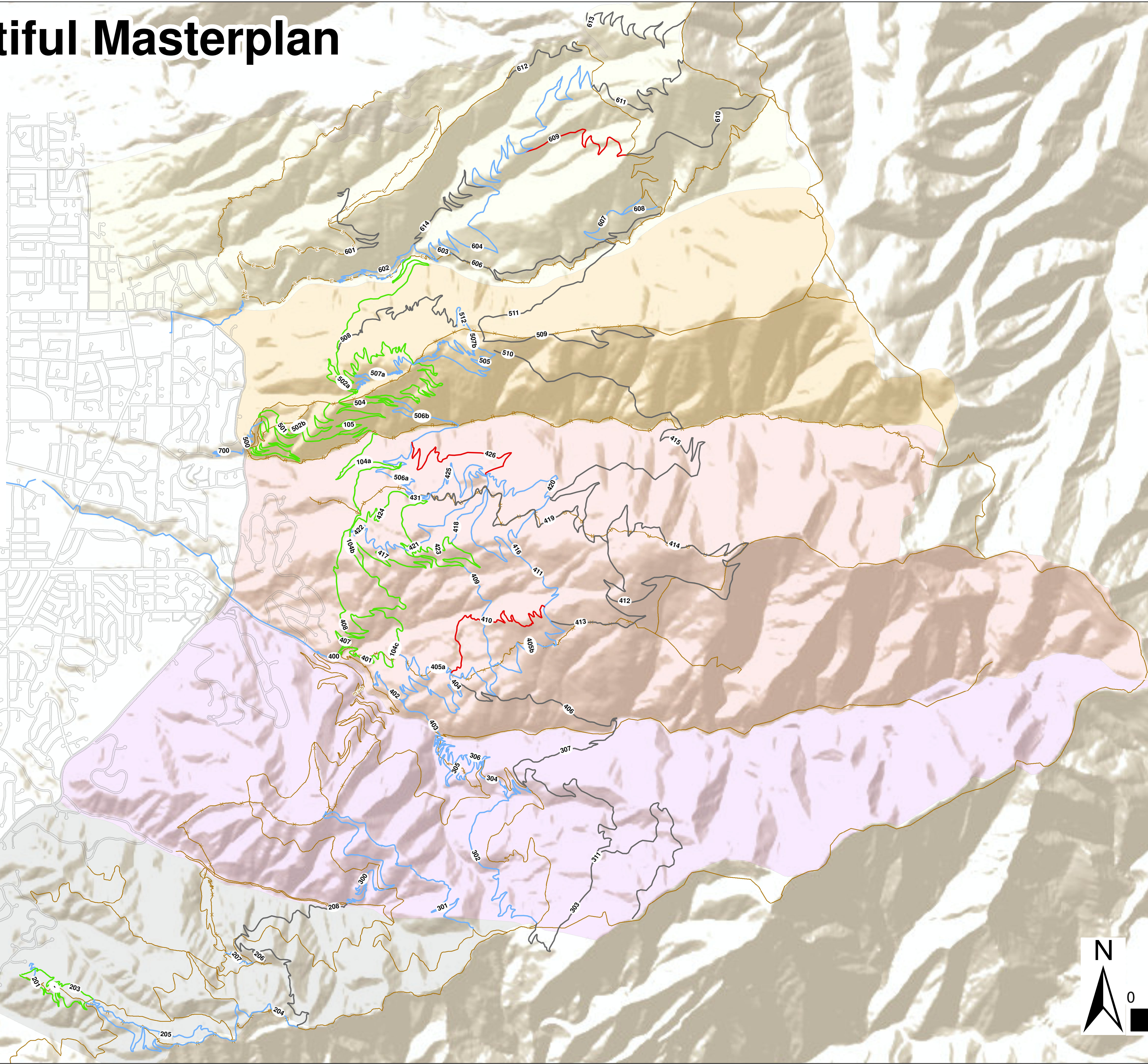
- BLK
- BLU
- DBLBLK
- GRN

Existing Trails

- Abandon
- ADOPT
- Extensive Maint.
- No Action
- Re-Route

Areas

- 1
- 2
- 3
- 4
- 5
- 6



| SEGMENT | T_ID | Difficult | TYPE | DIRECTIO | STYLE | DESIGN_ | UNGED_ | USE | USE | Len_MI | 2023_Pri |
|---------|--------|-----------|------|----------|-------|---------|--------|-----|-----|--------|----------|
| 104a | GRN | SGL | BI | TRD | MULTI | MULTI | 1.42 | 1a | | | |
| 104b | GRN | SGL | BI | TRD | MULTI | MULTI | 0.41 | 2b | | | |
| 104c | GRN | SGL | BI | TRD | MULTI | MULTI | 1.46 | 0 | | | |
| 105 | GRN | SGL | UP | TRD | MULTI | MULTI | 2.12 | 1a | | | |
| 105 | GRN | SGL | UP | TRD | MULTI | MULTI | 1.54 | 1a | | | |
| 201 | GRN | SGL | UP | TRD | HKBIK | HKBIK | 1.01 | 1a | | | |
| 202 | BLU | SGL | BI | CLX | HIKEQ | HIK | 0.18 | 4 | | | |
| 203 | GRN | SGL | DOWN | MBO | MTB | HKBIK | 0.72 | 3b | | | |
| 204 | BLU | SGL | BI | TRD | MULTI | MULTI | 2.12 | 4 | | | |
| 205 | BLU | SGL | DOWN | TRD | MULTI | MULTI | 1.23 | 4 | | | |
| 206 | BLK | SGL | BI | TRD | HKBIK | HKBIK | 1.39 | 4 | | | |
| 207 | BLU | SGL | BI | TRD | MULTI | MULTI | 0.23 | 3c | | | |
| 208 | BLK | SGL | BI | TRD | HKBIK | HKBIK | 1.00 | 3c | | | |
| 300 | BLU | SGL | BI | MBO | MTB | HKBIK | 1.83 | 1b | | | |
| 301 | BLU | SGL | BI | MBO | MTB | HKBIK | 1.96 | 1b | | | |
| 302 | BLU | SGL | BI | TRD | HKBIK | HKBIK | 1.69 | 3c | | | |
| 303 | BLK | SGL | BI | PBO | HKBIK | HKBIK | 2.72 | 3c | | | |
| 304 | BLU | SGL | DOWN | MBO | BIK | HKBIK | 0.83 | 1b | | | |
| 305 | BLU | SGL | DOWN | MBO | MTB | BIK | 1.50 | 1b | | | |
| 306 | BLU | SGL | BI | CLX | HIK | HIK | 1.13 | 1b | | | |
| 307 | BLK | SGL | BI | TRD | HKBIK | HKBIK | 1.02 | 1b | | | |
| 311 | BLK | SGL | BI | PBO | HKBIK | HKBIK | 1.78 | 3c | | | |
| 400 | BLU | SGL | DOWN | MBO | MTB | HKBIK | 0.21 | 1b | | | |
| 401 | GRN | SGL | BI | TRD | MULTI | MULTI | 0.49 | 3c | | | |
| 402a | BLU | SGL | BI | TRD | MULTI | MULTI | 1.44 | 3a | | | |
| 402b | BLU | SGL | BI | TRD | MULTI | MULTI | 1.17 | 3c | | | |
| 403 | BLU | SGL | BI | MBO | MTB | HKBIK | 0.36 | 1b | | | |
| 404 | BLU | SGL | DOWN | MBO | MTB | HKBIK | 1.45 | 1b | | | |
| 406 | BLU | SGL | DOWN | MBO | MTB | HKBIK | 0.79 | 1b | | | |
| 406 | BLK | SGL | BI | TRD | HKBIK | HKBIK | 1.46 | 1b | | | |
| 407 | GRN | SGL | DOWN | TRD | MTB | MTB | 1.01 | 3c | | | |
| 408 | GRN | SGL | DOWN | TRD | MTB | MTB | 0.77 | 3c | | | |
| 409 | BLU | SGL | BI | TRD | HKBIK | HKBIK | 0.75 | 3a | | | |
| 410 | DBLBLK | SGL | DOWN | PBO | MTB | MTB | 1.46 | 3c | | | |
| 411 | BLU | SLG | BI | TRD | HKBIK | HKBIK | 0.66 | 3c | | | |
| 412 | BLK | SGL | BI | PBO | HKBIK | HKBIK | 1.59 | 3c | | | |
| 413 | BLK | SGL | BI | PBO | HKBIK | HKBIK | 1.52 | 3c | | | |
| 414 | BLK | SGL | BI | CLX | MULTI | MULTI | 2.44 | 3c | | | |
| 415 | BLK | SGL | BI | CLX | MULTI | MULTI | 2.11 | 3c | | | |
| 416 | BLU | SGL | BI | TRD | MTB | MTB | 1.57 | 3b | | | |
| 417 | GRN | SGL | BI | TRD | MTB | MULTI | 2.16 | 2b | | | |
| 418 | BLU | SGL | BI | TRD | MTB | MTB | 0.51 | 2b | | | |
| 419 | BLK | SGL | BI | CLX | MULTI | MULTI | 1.94 | 3c | | | |
| 420 | BLU | SGL | DOWN | MBO | BIK | BIK | 1.00 | 3b | | | |
| 421 | BLU | SGL | DOWN | MBO | BIK | BIK | 1.08 | 2b | | | |
| 422 | BLU | SGL | DOWN | JMP | MTB | MTB | 0.80 | 2b | | | |
| 423 | GRN | SGL | DOWN | TRD | MTB | MTB | 0.61 | 2b | | | |
| 424 | GRN | SGL | DOWN | TRD | MTB | MTB | 1.51 | 2b | | | |
| 425 | BLU | SGL | BI | TRD | HKBIK | HKBIK | 1.21 | 2b | | | |
| 426 | DBLBLK | SGL | DOWN | PBO | MTB | MTB | 1.32 | 3b | | | |
| 431 | BLU | SGL | BI | CLX | HIK | HIK | 0.07 | 2b | | | |
| 500 | BLU | SGL | BI | CLX | HIK | HIK | 0.37 | 4 | | | |
| 501 | GRN | SGL | UP | MBO | MTB | HKBIK | 1.01 | 3a | | | |
| 502a | GRN | SGL | DOWN | MBO | BIK | MTB | 1.78 | 1c | | | |
| 502b | GRN | SGL | DOWN | MBO | BIK | BIK | 2.23 | 3a | | | |
| 502b | GRN | SGL | DOWN | MBO | BIK | BIK | 0.50 | 3b | | | |
| 504 | GRN | SGL | BI | MBO | BIK | MTB | 2.55 | 1c | | | |
| 505 | BLU | SGL | BI | MBO | BIK | MTB | 1.31 | 1c | | | |
| 505a | BLU | SGL | BI | TRD | HKBIK | HKBIK | 0.64 | 2b | | | |
| 505b | BLU | SGL | BI | TRD | HKBIK | HKBIK | 1.57 | 3b | | | |
| 507a | BLU | SGL | DOWN | MBO | BIK | MTB | 1.34 | 1c | | | |
| 507b | BLU | SGL | DOWN | MBO | BIK | MTB | 1.09 | 1c | | | |
| 508 | BLK | SGL | DOWN | MBO | BIK | MTB | 1.68 | 1c | | | |
| 509 | BLK | SGL | BI | TRD | HKBIK | HKBIK | 1.43 | 3c | | | |
| 510 | BLK | SGL | BI | TRD | HKBIK | HKBIK | 1.43 | 3c | | | |
| 511 | BLK | SGL | BI | TRD | HKBIK | HKBIK | 1.22 | 3c | | | |
| 512 | BLU | SGL | DOWN | MBO | BIK | MTB | 0.34 | 1c | | | |
| 619a | BLU | SGL | BI | TRD | MULTI | HIK | 0.01 | 4 | | | |
| 619b | BLU | SGL | BI | TRD | MULTI | HIK | 0.07 | 4 | | | |
| 619c | BLU | SGL | BI | TRD | MULTI | HIK | 0.03 | 4 | | | |
| 619d | BLU | SGL | BI | TRD | MULTI | HIK | 0.01 | 4 | | | |
| 619e | BLU | SGL | BI | TRD | MULTI | HIK | 0.05 | 4 | | | |
| 619f | BLU | SGL | BI | TRD | MULTI | HIK | 0.14 | 4 | | | |
| 619g | BLU | SGL | BI | TRD | MULTI | HIK | 0.03 | 4 | | | |
| 619h | BLU | SGL | BI | TRD | MULTI | HIK | 0.05 | 4 | | | |
| 601 | BLK | SGL | BI | CLX | MOTO | MOTO | 1.20 | 2a | | | |
| 602 | BLU | SGL | DOWN | TRD | HKBIK | HKBIK | 0.79 | 4 | | | |
| 603 | BLU | SGL | DOWN | TRD | HKBIK | HKBIK | 0.38 | 3c | | | |
| 604 | BLU | SGL | DOWN | MBO | MTB | HKBIK | 4.31 | 3c | | | |
| 606 | BLK | SGL | BI | TRD | HKBIK | HKBIK | 1.24 | 3c | | | |
| 607 | BLU | SGL | DOWN | TRD | MULTI | MULTI | 0.46 | 3c | | | |
| 608 | BLU | SGL | DOWN | TRD | MOTO | MULTI | 0.39 | 3c | | | |
| 609 | DBLBLK | SGL | DOWN | PBO | MTB | MTB | 1.11 | 3c | | | |
| 610 | BLK | SGL | DOWN | PBO | MOTO | MULTI | 1.10 | 3c | | | |
| 611 | BLK | SGL | BI | MBO | BIK | MULTI | 1.39 | 3c | | | |
| 612 | BLK | SGL | BI | CLX | MOTO | MULTI | 0.74 | 3c | | | |
| 613 | BLK | SGL | BI | TRD | BIK | HKBIK | 1.62 | 4 | | | |
| 614 | BLK | SGL | DOWN | MBO | MTB | MTB | 1.41 | 3c | | | |
| 700 | BLU | SGL | BI | MBO | HKBIK | HIK | 0.36 | 1c | | | |

