

# Bountiful Masterplan

## Legend

----- PROPOSED

BRIDGE

## Bountiful TIP Trails

EASY (GREEN)

INTERMEDIATE (BLUE)

DIFFICULT (BLACK)

EXPERT (DOUBLE BLACK)

## Existing Trails

Abandon

ADOPT

Extensive Maint.

No Action

Re-Route

BST

BST

BST

BST

BST

BST

BST

BST

BST

BST

BST

BST

BST

BST

BST

BST

BST

BST

BST

BST

BST

BST

BST

BST

BST

BST

BST

BST

BST

BST

BST

BST

BST

BST

BST

BST

BST

BST

BST

BST

BST

BST

BST

BST

BST

BST

BST

BST

BST

BST

BST

BST

BST

BST

## Areas

1

2

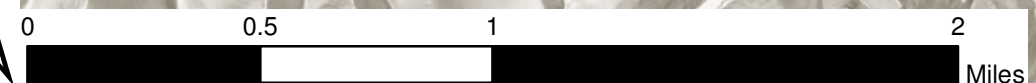
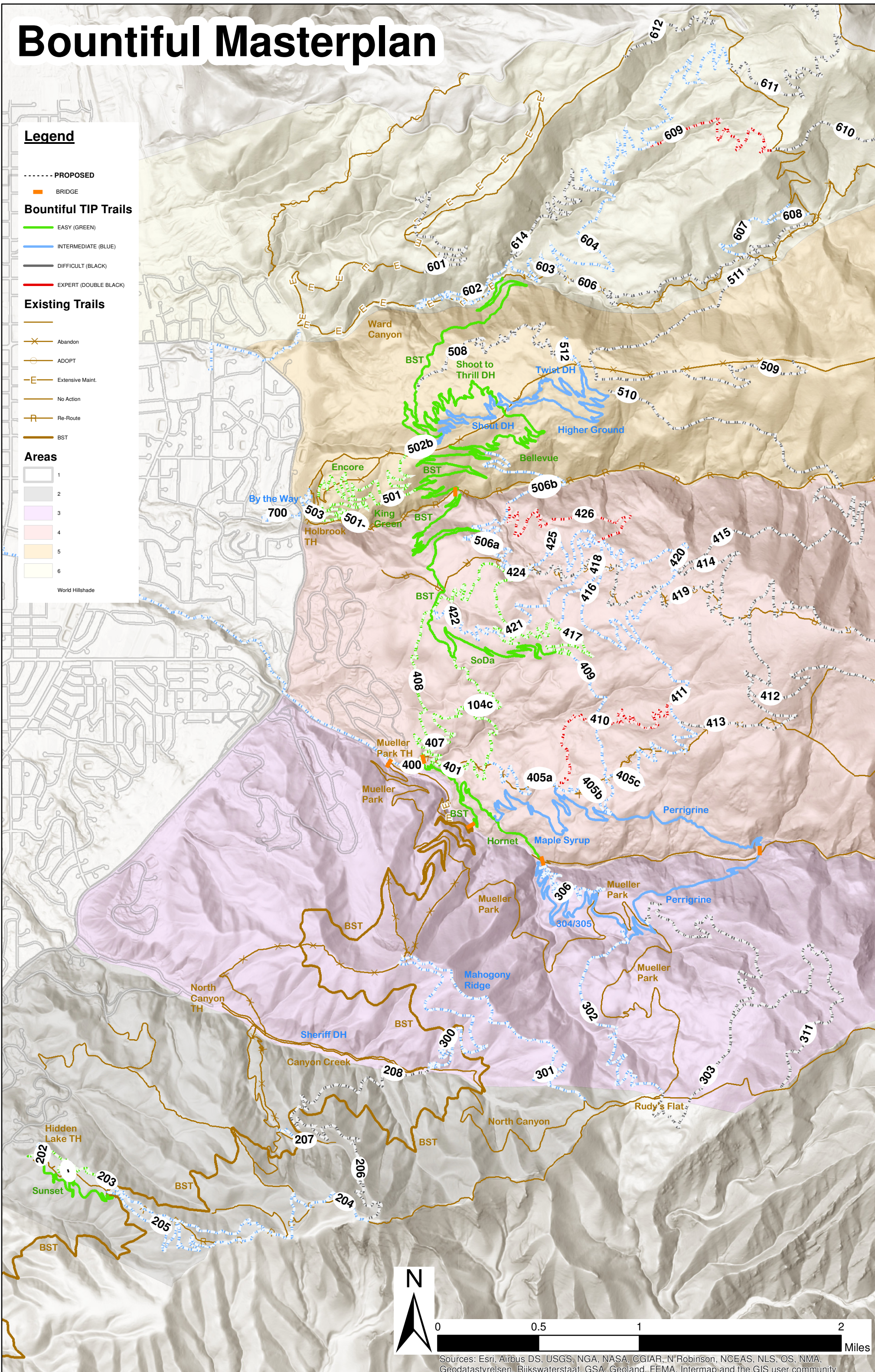
3

4

5

6

World Hillshade



Sources: Esri, Airbus DS, USGS, NGA, NASA, CGIAR, N'Robinson, NCEAS, NLS, OS, NMA, Geodatastyrelsen, Rijkswaterstaat, GSA, Geoland, FEMA, Intermap and the GIS user community



# Bountiful Masterplan

## Legend

- PROPOSED
- Bountiful TIP Trails**
  - EASY (GREEN)
  - INTERMEDIATE (BLUE)
  - DIFFICULT (BLACK)
  - EXPERT (DOUBLE BLACK)
- Existing Trails**
  - Abandon
  - ADOPT
  - Extensive Maint.
  - No Action
  - Re-Route
  - BST
- Areas**
  - 1
  - 2
  - 3
  - 4
  - 5
  - 6
- World Hillshade

COMPLETED TRAILS										
SEGM	ENT	Difficulty	TYPE	STYLE	DIRECTI	DESIGN	MNGED	Len	MUF	Priority
103	GFN	SGL	TRD	BOTH	HKEBK	HKEBK		0.24	1b	
104a	GFN	SGL	TRD	BOTH	HKEBK	HKEBK		1.82	1a	
104b	GFN	SGL	TRD	BOTH	MULTI	MULTI		0.44	2b	
105	GFN	SGL	TRD	BOTH	MULTI	MULTI		2.21	1a	
105	GFN	SGL	TRD	BOTH	MULTI	MULTI		1.63	1a	
201	GFN	SGL	TRD	BOTH	HKEBK	HKEBK		1.00	1a	
240	GFN	SGL	TRD	BOTH	HKEBK	HKEBK		0.43	1b	
304	BLU	SGL	MBO	DOWN	BK	HKEBK		0.83	1b	
305	BLU	SGL	MBO	DOWN	MTB	BK		1.50	1b	
307	BLU	SGL	TRD	BOTH	HKEBK	HKEBK		1.04	1b	
402	GFN	SGL	MBO	BOTH	MTB	HKEBK		0.46	1b	
403	GFN	SGL	MBO	BOTH	MTB	HKEBK		0.36	1b	
404	BLU	SGL	MBO	BOTH	MTB	HKEBK		1.44	1b	
406	BLU	SGL	TRD	BOTH	HKEBK	HKEBK		1.49	1b	
417	GFN	SGL	TRD	BOTH	MTB	MULTI		1.41	2b	
502a	GFN	SGL	MBO	DOWN	BK	MTB		1.67	1c	
504	GFN	SGL	MBO	BOTH	BK	MTB		2.16	1c	
505	BLU	SGL	MBO	BOTH	BK	MTB		1.35	1c	
507a	BLU	SGL	MBO	DOWN	BK	MTB		1.46	1c	
507b	BLU	SGL	MBO	DOWN	BK	MTB		1.22	1c	

OTHER MASTER PLANNED TRAILS										
SEGM	ENT	Difficulty	TYPE	STYLE	DIRECTI	DESIGN	MNGED	Len	MUF	Priority
104c	GFN	SGL	TRD	BOTH	MULTI	MULTI		1.44		
202	BLU	SGL	CLX	BOTH	HKEBK	HKEBK		0.18	4	
203	GFN	SGL	MBO	DOWN	MTB	HKEBK		0.72	3b	
204	BLU	SGL	TRD	BOTH	MULTI	MULTI		2.12	4	
205	BLU	SGL	TRD	DOWN	MULTI	MULTI		1.23	4	
206	BLK	SGL	TRD	BOTH	HKEBK	HKEBK		1.39	4	
207	BLU	SGL	TRD	BOTH	MULTI	MULTI		0.23	3c	
208	BLK	SGL	TRD	BOTH	HKEBK	HKEBK		1.00	3c	
300	BLU	SGL	MBO	BOTH	MTB	HKEBK		1.83	1b	
301	BLU	SGL	MBO	BOTH	MTB	HKEBK		1.96	1b	
302	BLU	SGL	TRD	BOTH	HKEBK	HKEBK		1.69	3c	
303	BLK	SGL	PBO	BOTH	HKEBK	HKEBK		2.72	3c	
306	BLU	SGL	CLX	BOTH	HKEBK	HKEBK		1.13	1b	
311	BLK	SGL	PBO	BOTH	HKEBK	HKEBK		1.78	3c	
400	BLU	SGL	MBO	DOWN	MTB	HKEBK		0.21	1b	
401	GFN	SGL	TRD	BOTH	MULTI	MULTI		0.49	3c	
405a	BLU	SGL	TRD	BOTH	MULTI	MULTI		0.75	3c	
405b	BLU	SGL	TRD	BOTH	MULTI	MULTI		0.69	2a	
405c	BLU	SGL	TRD	BOTH	MULTI	MULTI		1.17	3c	
407	GFN	SGL	TRD	DOWN	MTB	MTB		1.01	3c	
408	GFN	SGL	TRD	DOWN	MTB	MTB		0.77	3c	
409	BLU	SGL	TRD	BOTH	HKEBK	HKEBK		0.75	2a	
410	DELEBK	SGL	PBO	DOWN	MTB	MTB		1.46	3c	
411	BLU	SGL	TRD	BOTH	HKEBK	HKEBK		0.66	3c	
412	BLK	SGL	PBO	BOTH	HKEBK	HKEBK		1.59	3c	
413	BLK	SGL	PBO	BOTH	HKEBK	HKEBK		1.52	3c	
414	BLK	SGL	CLX	BOTH	MULTI	MULTI		2.44	3c	
415	BLK	SGL	CLX	BOTH	MULTI	MULTI		2.11	3c	
416	BLU	SGL	TRD	BOTH	MTB	MTB		1.57	3b	
417	GFN	SGL	TRD	BOTH	MTB	MULTI		0.08	3a	
417	GFN	SGL	TRD	BOTH	MTB	MULTI		0.63	3b	
418	BLU	SGL	TRD	BOTH	MTB	MTB		0.51	3b	
419	BLK	SGL	CLX	BOTH	MULTI	MULTI		1.94	3c	
420	BLU	SGL	MBO	DOWN	BK	BK		1.00	3b	
421	BLU	SGL	MBO	DOWN	BK	BK		1.08	3b	
422	BLU	SGL	JMP	DOWN	MTB	MTB		0.80	3b	
423	GFN	SGL	TRD	DOWN	MTB	MTB		0.61	3b	
424	GFN	SGL	TRD	DOWN	MTB	MTB		1.51	3b	
425	BLU	SGL	TRD	BOTH	HKEBK	HKEBK		1.20	3b	
426	DELEBK	SGL	PBO	DOWN	MTB	MTB		1.32	3b	
431	BLU	SGL	CLX	BOTH	HKEBK	HKEBK		0.07	3b	
500	BLU	SGL	CLX	BOTH	HKEBK	HKEBK		0.28		
501	GFN	SGL	MBO	BOTH	MTB	HKEBK		1.33	2a	
501-	GFN			BOTH				0.08		
502b	GFN	SGL	MBO	DOWN	BK	BK		1.70	2a	
503	GFN	SGL	MBO	DOWN	BK	BK		0.45		
506a	BLU	SGL	TRD	BOTH	HKEBK	HKEBK		0.64	3b	
506b	BLU	SGL	TRD	BOTH	HKEBK	HKEBK		1.58	3b	
508	BLK	SGL	MBO	DOWN	BK	MTB		1.68	3a	
509	BLK	SGL	TRD	BOTH	HKEBK	HKEBK		1.43	3c	
510	BLK	SGL	TRD	BOTH	HKEBK	HKEBK		1.43	3c	
511	BLK	SGL	TRD	BOTH	HKEBK	HKEBK		1.22	3c	
512	BLU	SGL	MBO	DOWN	BK	MTB		0.34	3a	
601	BLK	SGL	CLX	BOTH	MOTO	MOTO		1.20	2a	
602	BLU	SGL	TRD	DOWN	HKEBK	HKEBK		0.79	4	
603	BLU	SGL	TRD	DOWN	HKEBK	HKEBK		0.38	3c	
604	BLU	SGL	MBO	DOWN	MTB	HKEBK		4.31	3c	
606	BLK	SGL	TRD	BOTH	HKEBK	HKEBK		1.24	3c	
607	BLU	SGL	TRD	DOWN	MOTO	MULTI		0.46	3c	
608	BLU	SGL	TRD	DOWN	MOTO	MULTI		0.39	3c	
609	DELEBK	SGL	PBO	DOWN	MTB	MTB		1.10	3c	
610	BLK	SGL	PBO	DOWN	MOTO	MULTI		1.10	3c	
611	BLK	SGL	MBO	BOTH	BK	MULTI		1.39	3c	
612	BLK	SGL	CLX	BOTH	MOTO	MULTI		0.74	3c	
613	BLK	SGL	TRD	BOTH	BK	HKEBK		1.61	4	
614	BLK			DOWN				1.41	3c	
619a	BLU	SGL	TRD	BOTH	MULTI	HKEBK		0.01	4	
619b	BLU	SGL	TRD	BOTH	MULTI	HKEBK		0.07	4	
619c	BLU	SGL	TRD	BOTH	MULTI	HKEBK		0.03	4	
619d	BLU	SGL	TRD	BOTH	MULTI	HKEBK		0.01	4	
619e	BLU	SGL	TRD	BOTH	MULTI	HKEBK		0.05	4	
619f	BLU	SGL	TRD	BOTH	MULTI	HKEBK		0.14	4	
619g	BLU	SGL	TRD	BOTH	MULTI	HKEBK		0.03	4	
619h	BLU	SGL	TRD	BOTH	MULTI	HKEBK		0.05	4	
700	BLU	SGL	MBO	BOTH	HKEBK	HKEBK		0.36	1c	

