



BOUNTIFUL TRAILS MASTER PLAN

Bountiful, Utah

October 2019



THIS PAGE INTENTIONALLY LEFT BLANK

acknowledgements

Mayor

Randy Lewis

City Council

Kate Bradshaw
Kendalyn Harris
Richard Higginson
John Marc Knight
Chris R. Simonsen

Trails Committee

Benj Becker
Jesse Bell
Melanie Larsen
Lori Lee
Matt Murri
Eric Rasmussen

Bountiful City Staff

Francisco Astoga
Brock Hill
Curtis Poole

Consultant Team

blū line designs

Planning

Planning Director
Parks Director
City Planner

THIS PAGE INTENTIONALLY LEFT BLANK

table of contents

1 INTRODUCTION & PURPOSE	5
1.1 - Introduction & Purpose	5
1.2 - Executive Summary	5
2 NEEDS ASSESSMENT	11
2.1 - Existing Trail Facilities	11
2.2 - Needs Assessment	11
2.2.1 - Trails Committee	11
2.2.2 - Community Survey	15
2.2.3 - Public Open House	25
3 VISION, GOALS, AND OBJECTIVES	27
3.1 - 2009 Master Plan Issues and Goals	27
3.2 - Vision, Goals, and Objectives	28
4 PROPOSED IMPROVEMENTS	31
4.1 - Trail Improvements	31
4.2 - Trail Signage and Wayfinding	32
4.3 - Bonneville Shoreline Trail	32
5 PRELIMINARY COST ESTIMATES	35
5.1 - Preliminary Cost Estimates	35

LIST OF FIGURES AND TABLES

Figure 1.2.1 - Trails Master Plan	7
Figure 1.2.2 - Trailhead Sign & Kiosk (Front)	9
Figure 1.2.3 - Trailhead Sign & Kiosk (Back)	9
Figure 1.2.4 - Wayfinding & Direction Sign Post	10
Figure 1.2.5 - Trail Marker	10
Figure 2.1 - Existing Trail System Map	13
Figure 2.2.2 - Community Survey Questionnaire	15
Figure 4.3 - Bonneville Shoreline Trail Farmington to Salt Lake	33
Table 2.1 - Existing Trail Inventory	11
Table 4.1 - New Trail Inventory	31
Table 5.1 - Preliminary Cost Estimates	36

APPENDICES

A Community Survey Responses	
--------------------------------	--

THIS PAGE INTENTIONALLY LEFT BLANK



CHAPTER ONE | INTRODUCTION & PURPOSE

INTEREST, USAGE, AND DEMAND ON BOUNTIFUL CITY'S RECREATIONAL TRAIL SYSTEM IS CONTINUING TO INCREASE. IMPROVEMENTS TO AND CONTINUED MANAGEMENT OF THE EXISTING TRAIL SYSTEM NEEDS TO ACCOMMODATE THESE ANTICIPATED NEEDS. THIS MASTER PLAN DOCUMENT EVALUATES THE CURRENT SYSTEM AND IDENTIFIES FUTURE IMPROVEMENTS TO HELP KEEP UP WITH TRAIL USAGE AND DEMAND.

1.1 - INTRODUCTION & PURPOSE

Settled within the foothills of the Wasatch Mountain Range, Bountiful is perfectly situated to provide access to miles of recreational trails and to the natural amenities that the mountains provide. Bountiful City is dedicated to providing a trail system that is well maintained, safe, and allows for continued mountain access by its population.

Bountiful City last completed a Recreation and Trails Master Plan in 2009. Priorities and needs have changed over the past 10 years and an update is needed. The main purposes of this document are to establish goals; and to identify and prioritize trail projects to keep up with demand.

1.2 - EXECUTIVE SUMMARY

This Bountiful Trails Master Plan Update documents the needs assessment component of the project; establishes an updated vision and goals and objectives; identifies proposed trail improvements; recommends a family of trail signage and wayfinding elements; and provides preliminary estimates of construction costs for priority projects for budgeting purposes.

1.2.1 - NEEDS ASSESSMENT

EXISTING TRAILS

The existing recreational trail system is inventoried and mapped. (*see Table 2.1 - Existing Trail Inventory and Figure 2.1 - Existing Trail System Map*)

NEEDS ASSESSMENT

A multi-faceted approach was taken to identify future needs and necessary improvements to Bountiful's existing recreational trail system. The process included meeting regularly with the Bountiful Trails Committee to gather their input and discuss their priorities; meeting and coordinating with City staff; and engaging the public through a community survey and a public open house. The results of this process included further guidance on needed improvements and priority projects; confirmation of the overwhelming demand for trails by specific user groups (mountain biking, equestrian, etc.) and the general public; and the need to have a cohesive plan and guiding document that lays the ground work for future funding and improvements.

1.2.2 - VISION, GOALS AND OBJECTIVES

As informed by the needs assessment task of this process, an updated vision along with supporting goals and objectives were developed. These were presented at the public open house and represent the essence of City desires and what this plan hopes to achieve.

1.2.3 - PROPOSED IMPROVEMENTS

TRAIL IMPROVEMENTS

Based upon the needs assessment process, proposed improvements and projects have been identified. (*see Figure 1.2.1 - Trails Master Plan*) These include:

- Creekside Trail
- Holbrook Canyon Bridges
- Holbrook Canyon Trail connection to Eggett Park including culvert
- Holbrook Canyon Trail connection to Ward Canyon Trail
- Mueller Park Downhill Trail
- North Canyon Single Track Trail
- North Canyon Trailhead
- Twin Hollow (Cheese) Park Pump Track
- Urban Bonneville Shoreline Trail (Bountiful Blvd. connection to Ward Canyon)
- Ward Canyon Trail connection to Tolman (Rocket) Park
- Ward Canyon Trail connection to Temple Ridge Trail

TRAIL SIGNAGE AND WAYFINDING

There is not a consistent signage and wayfinding design standard along the trail system or at the existing trailheads. Proposed designs for trailhead signage, trail signage, and wayfinding markers are included in this document to provide a cohesive standard to better announce, inform, and guide trail users. (*see Figure 1.2.2, 1.2.3, 1.2.4, and 1.2.5*)

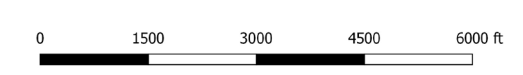
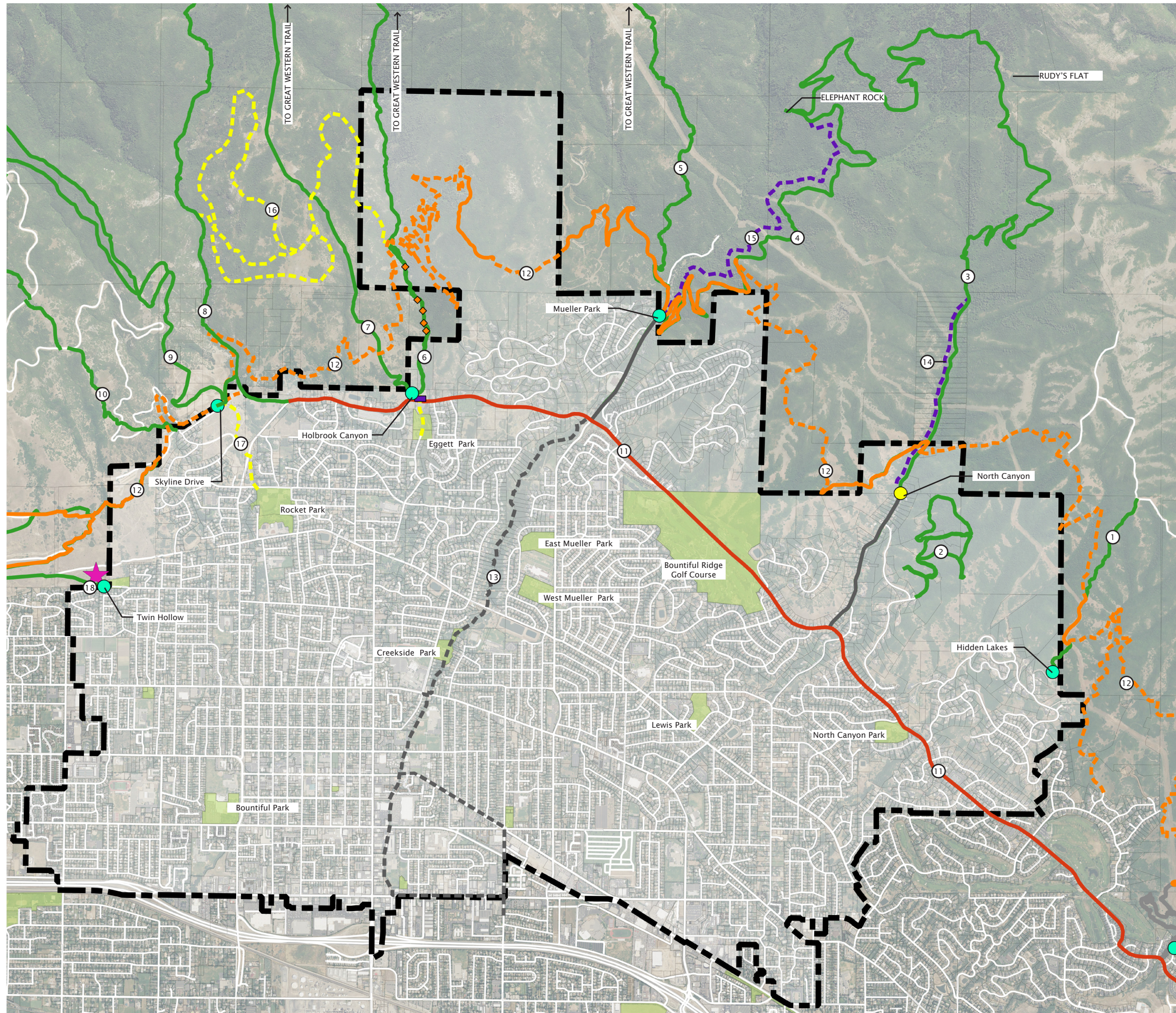
BONNEVILLE SHORELINE TRAIL

Though the connection and development of the Bonneville Shoreline Trail along Bountiful's east bench is not City governed the current proposed alignment has been included in the Trails Master Plan.

1.2.4 - PRELIMINARY COST ESTIMATES

To facilitate City funding and budgets and to assist in fundraising opportunities, preliminary construction cost estimates have been provided for the priority projects identified in this document.

FIGURE 1.2.1 - TRAILS MASTER PLAN



THIS PAGE INTENTIONALLY LEFT BLANK

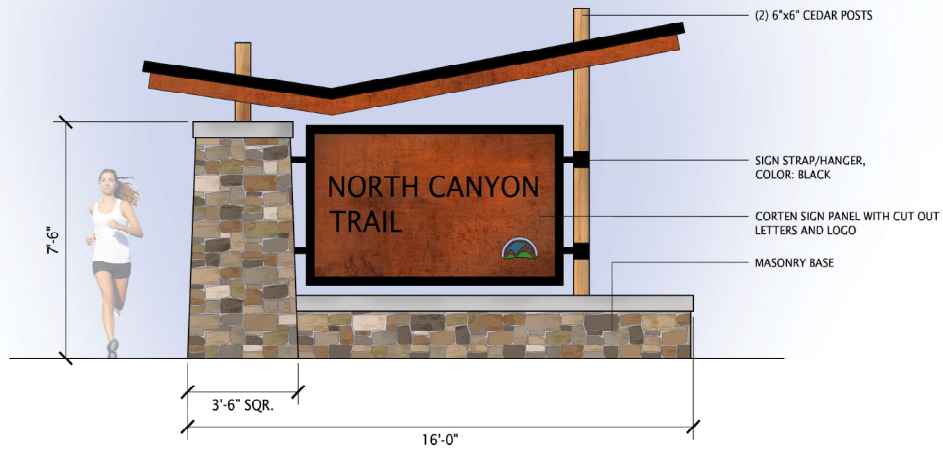


FIGURE 1.2.2 - TRAILHEAD SIGN & KIOSK (FRONT)

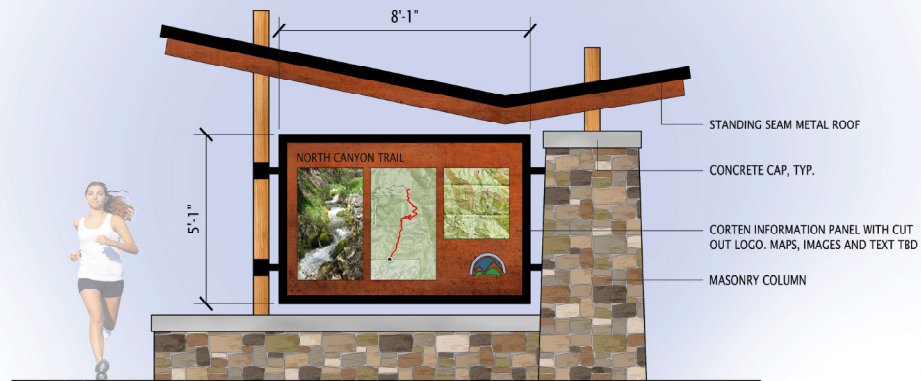


FIGURE 1.2.3 - TRAILHEAD SIGN & KIOSK (BACK)

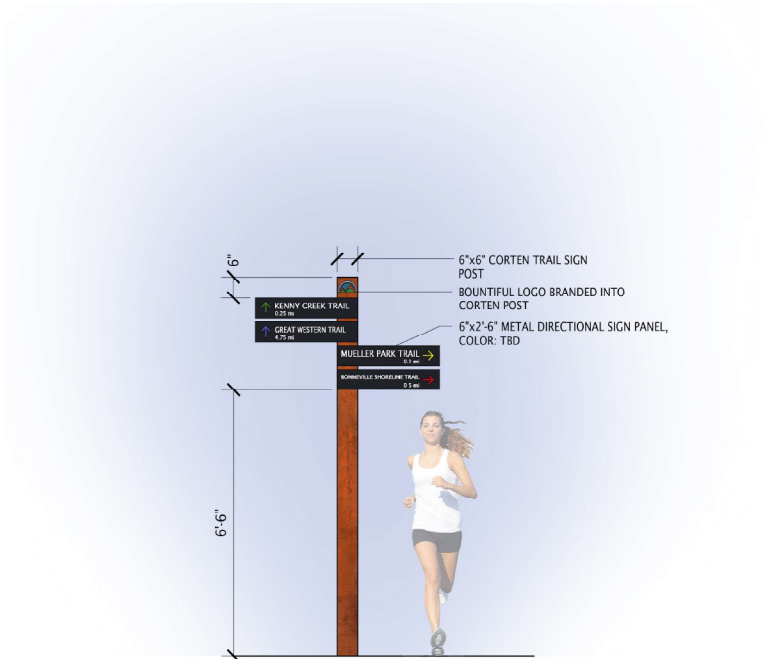


FIGURE 1.2.4 - DIRECTIONAL/WAYFINDING SIGN POST

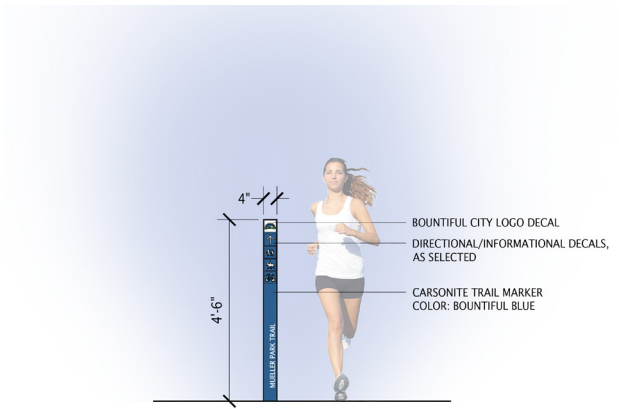


FIGURE 1.2.5 - TYPICAL TRAIL MARKER



CHAPTER TWO | NEEDS ASSESSMENT

BOUNTIFUL CITY HAS A WEALTH OF EXISTING TRAILS AND TRAILHEADS. DUE TO HIGH DEMAND AND OVERUSE OF SOME OF THESE FACILITIES MANY IMPROVEMENTS ARE WARRANTED TO BETTER EDUCATE AND PROVIDE FOR THE EVER INCREASING USE.

2.1 - EXISTING FACILITIES

The existing recreational trail system includes 5 existing trailheads and 11 designated trails that provide access from Bountiful City to the adjacent mountains, canyons, rivers, creeks, geologic features, nature, and other regional trail systems (*see Table 2.1 - Existing Trail Inventory and Figure 2.1 - Existing Trail System Map*). There are well over 50 miles of trail available for hiking, biking, running, equestrian use, etc.

2.2 - NEEDS ASSESSMENT

A multi-faceted approach was taken to identify future needs and necessary improvements to Bountiful’s existing

recreational trail system. These included meeting regularly with the Bountiful Trails Committee to gather their input and discuss their priorities; meeting and coordinating with City staff; and engaging the public through a community survey and a public open house.

2.2.1 - TRAILS COMMITTEE

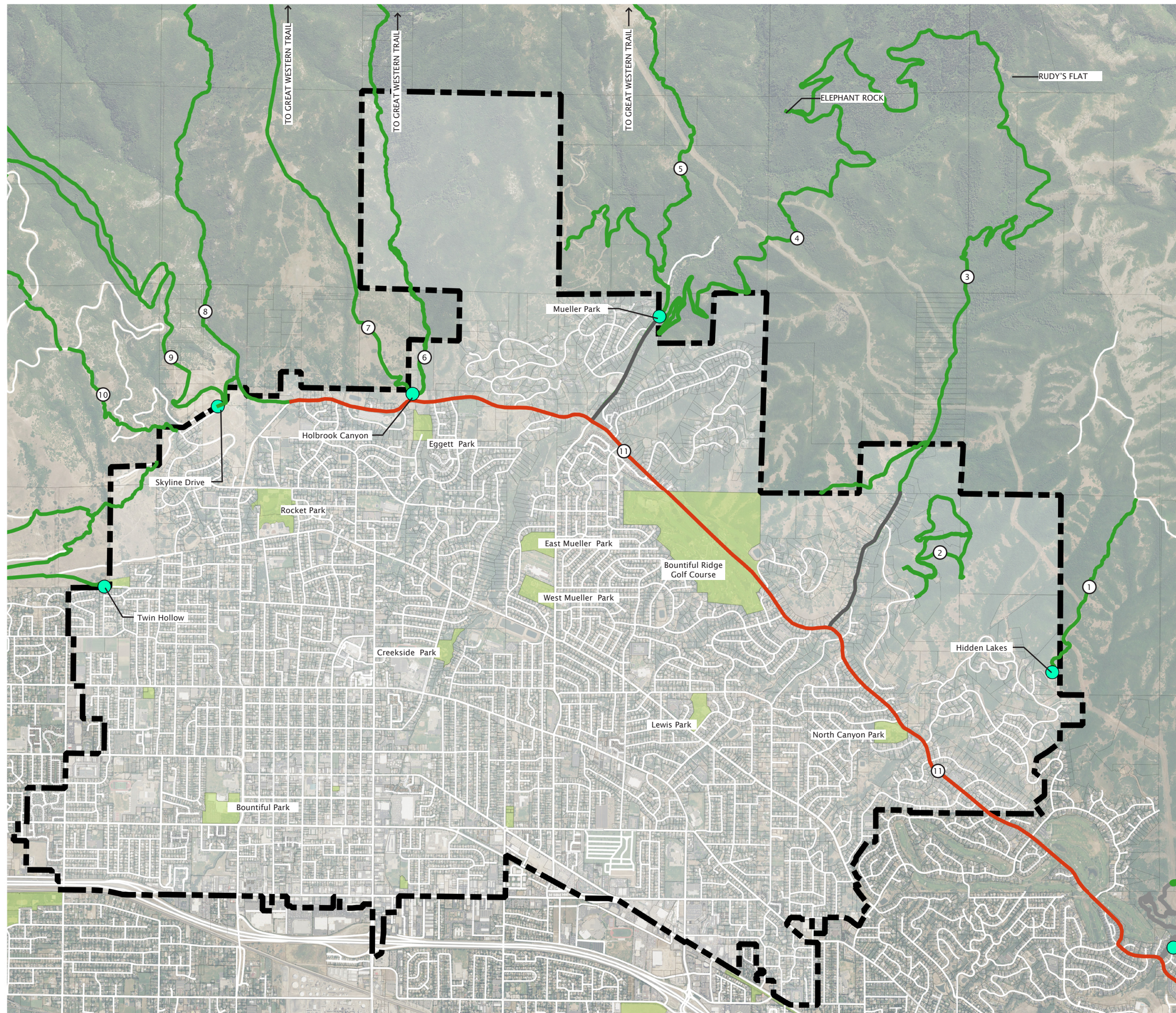
The Bountiful Trails and Walkways Committee (Trails Committee) has been meeting for 3.5 years to identify needs and focus efforts as it pertains to the City’s trails system. One of their key priorities was to complete this Trails Master Plan Update. Four meetings were held with the Trails Committee and City staff to understand the existing system - its strengths and deficiencies, and to identify priority projects that would meet the Trails Committee’s and community’s needs and goals. The Trails Committee was instrumental in updating the Vision, Goals and Objectives for the updated master plan (*see CHAPTER 3 - VISION, GOALS, and OBJECTIVES*).

TABLE 2.1 - EXISTING TRAIL INVENTORY

NAME	TYPE	LENGTH (APPROX.)
1. Canyon View Trail	Unpaved	1.1 miles
2. Highland Oaks Trail	Unpaved	1.95 miles
3. North Canyon Trail (to Elephant Rock)	Unpaved	6.39 miles
4. Mueller Park Trail (to Elephant Rock)	Unpaved	3.36 miles
5. Kenny Creek Trail	Unpaved	4.61 miles
6. Holbrook Trail	Unpaved	4.76 miles
7. Temple Ridge Trail	Unpaved	4.18 miles
8. Ward Canyon Trail	Unpaved	8.47 miles
9. Bountiful Downhill Trail	Unpaved	4.47 miles
10. Bountiful B Trail	Unpaved	1.8 miles
11. Urban Bonneville Shoreline Trail	Paved	4.47 miles
	Total =	44.46 miles

THIS PAGE INTENTIONALLY LEFT BLANK

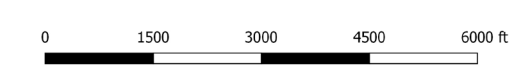
FIGURE 2.1 - EXISTING TRAIL SYSTEM MAP



Legend

- Existing Trail Heads
- Existing Urban BST
- Existing Paved Trails
- Existing Unpaved Trails
- Roads
- Bountiful
- Parks

- ① Canyon View Trail
- ② Highland Oaks Trail
- ③ North Canyon Trail (to Elephant Rock)
- ④ Mueller Park Trail (to Elephant Rock)
- ⑤ Kenny Creek Trail
- ⑥ Holbrook Trail
- ⑦ Temple Ridge Trail
- ⑧ Ward Canyon Trail
- ⑨ Bountiful Downhill Trail
- ⑩ Bountiful B Trail (Bomber Trail)
- ⑪ Urban Bonneville Shoreline Trail



THIS PAGE INTENTIONALLY LEFT BLANK

In addition to the proposed projects identified in **CHAPTER 4 - PROPOSED IMPROVEMENTS**, the Trails Committee is also working on funding for these improvements, such as applying for a Utah Outdoor Recreation Grant for the North Canyon Single Track Trail project. The Trails Committee meets monthly to coordinate, strategize, and discuss progress on identified tasks and projects.

respondents that do not currently use the trail system unanimously answered that it is because they do not know where the trails start. Related to that response, the most desired amenities to be developed are trailheads/restrooms and parking areas. Wayfinding/directional signage came in a close third.

2.2.2 - COMMUNITY SURVEY

As part of the Trails Master Plan Update process, Bountiful City administered a community-wide survey to gauge the public’s interest and usage of the existing trail system and to gather input as to desired additions and improvements. Responses were solicited in multiple ways including via Facebook, the City’s website, e-mail blast, and a public open house. There was a significant response to the survey with over 600 surveys taken. Survey questions and charts summarizing answers to each question are included ([see Figure 2.2.2 - Community Survey Questionnaire](#)) with full content included in the Appendix.

GENERAL OBSERVATIONS

Though people are generally satisfied with the Bountiful trail system, the large majority of respondents definitely think more trails are needed. The most common trail uses are hiking and biking. Predictably, Mueller Park is confirmed as the most popularly used trail. Tellingly,

FIGURE 2.2.2 - COMMUNITY SURVEY QUESTIONNAIRE

Q1 - First, please tell us a little about yourself. What is your age?

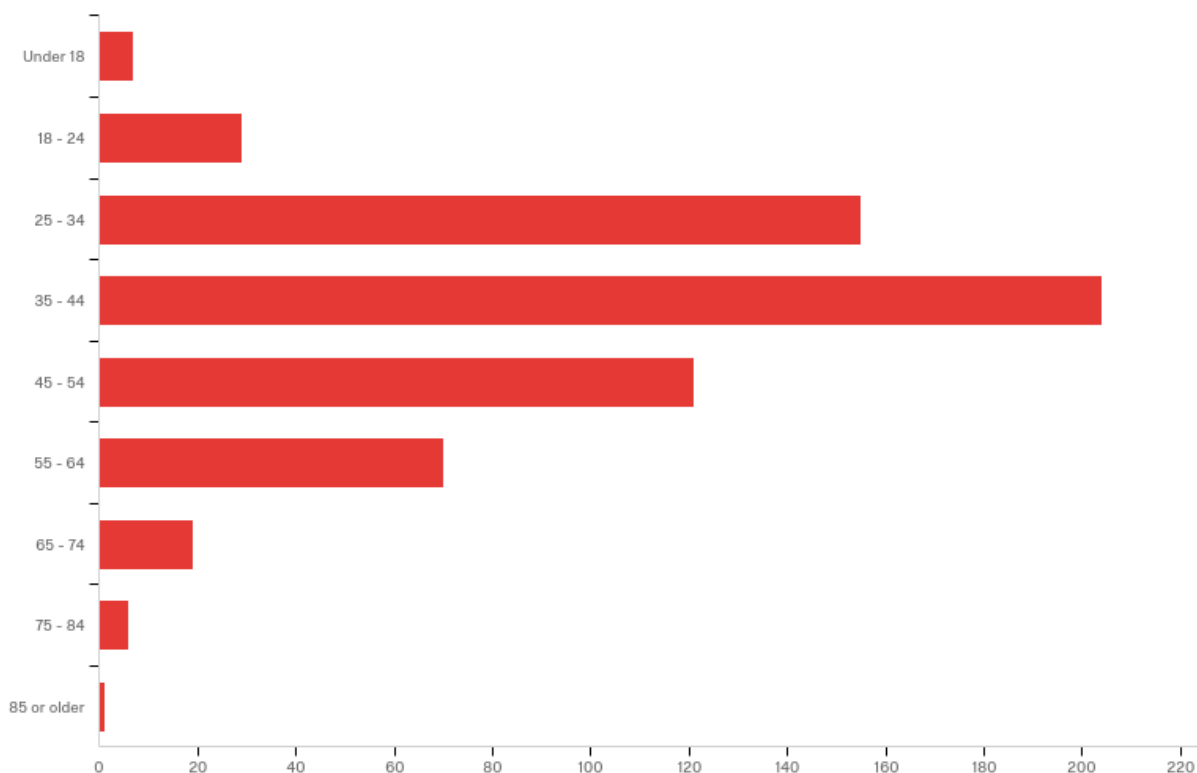
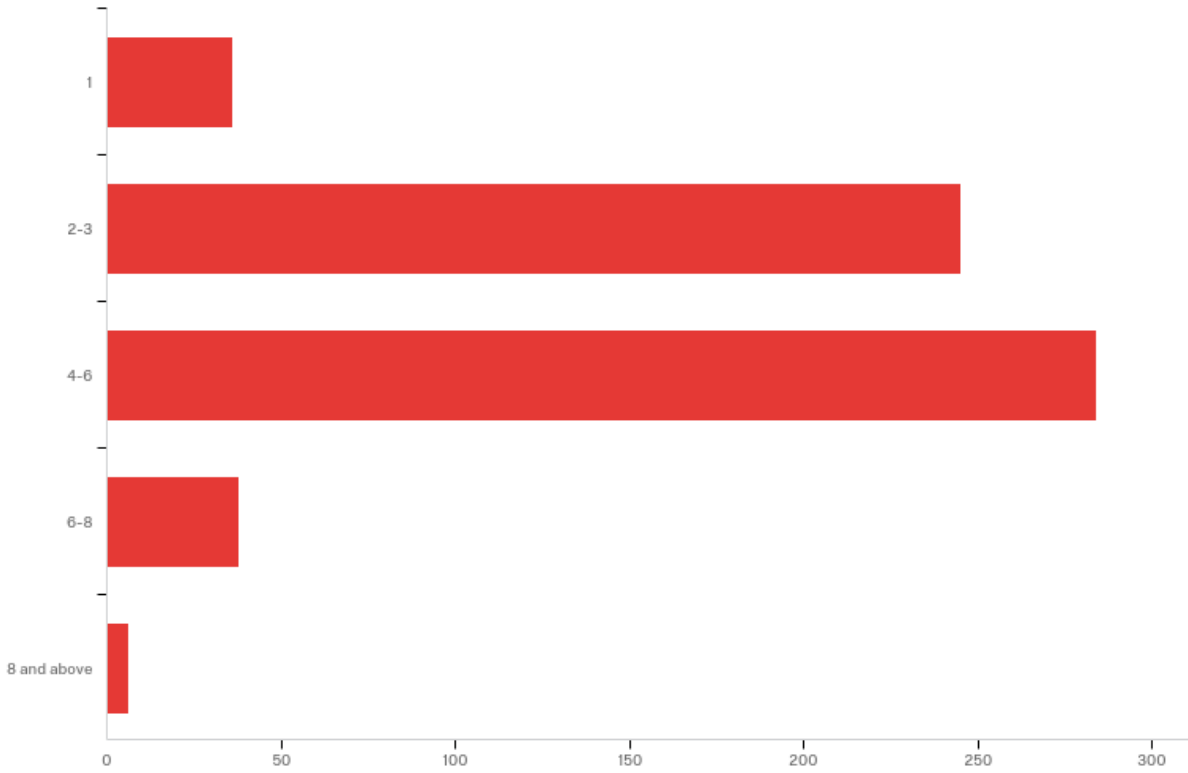


FIGURE 2.2.2 - COMMUNITY SURVEY QUESTIONNAIRE (CONT.)

Q2 - How many members are in your household?



Q3 - Are you a Bountiful resident?

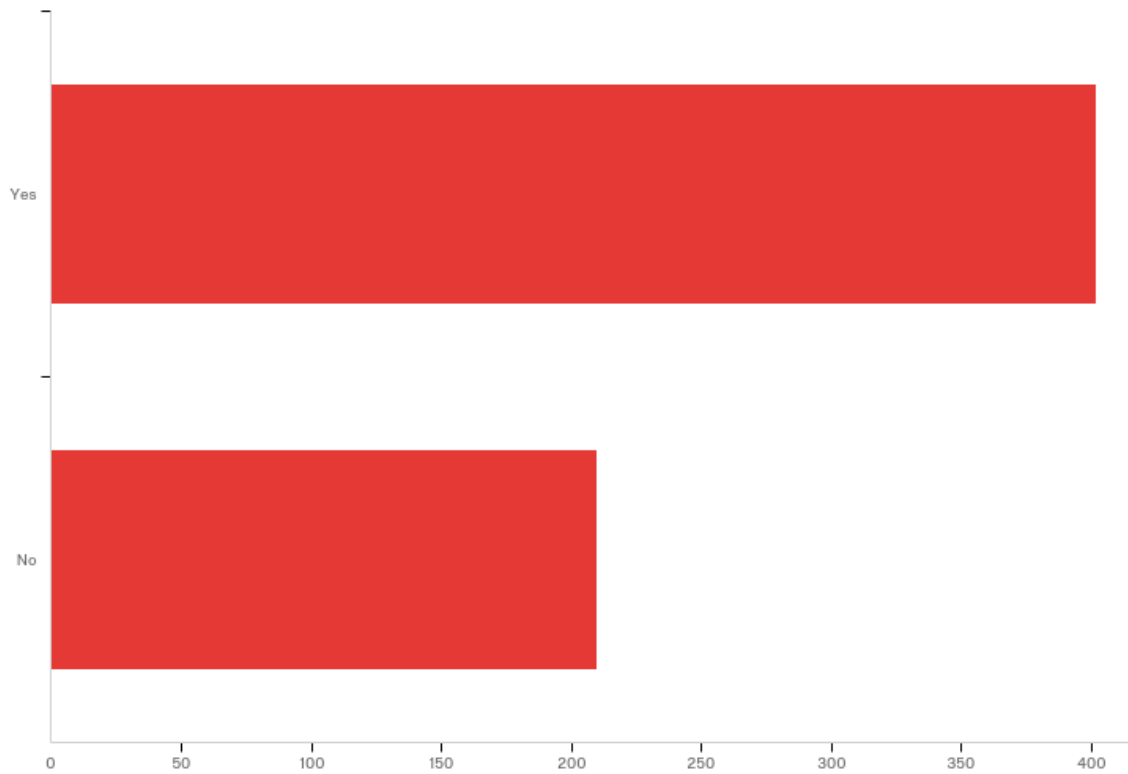


FIGURE 2.2.2 - COMMUNITY SURVEY QUESTIONNAIRE (CONT.)

Q4 - To help us understand who is using Bountiful trails, please list the Zip Code of the city where you live.

SEE APPENDIX

Q5 - Which trails do you use? Please select all that apply.

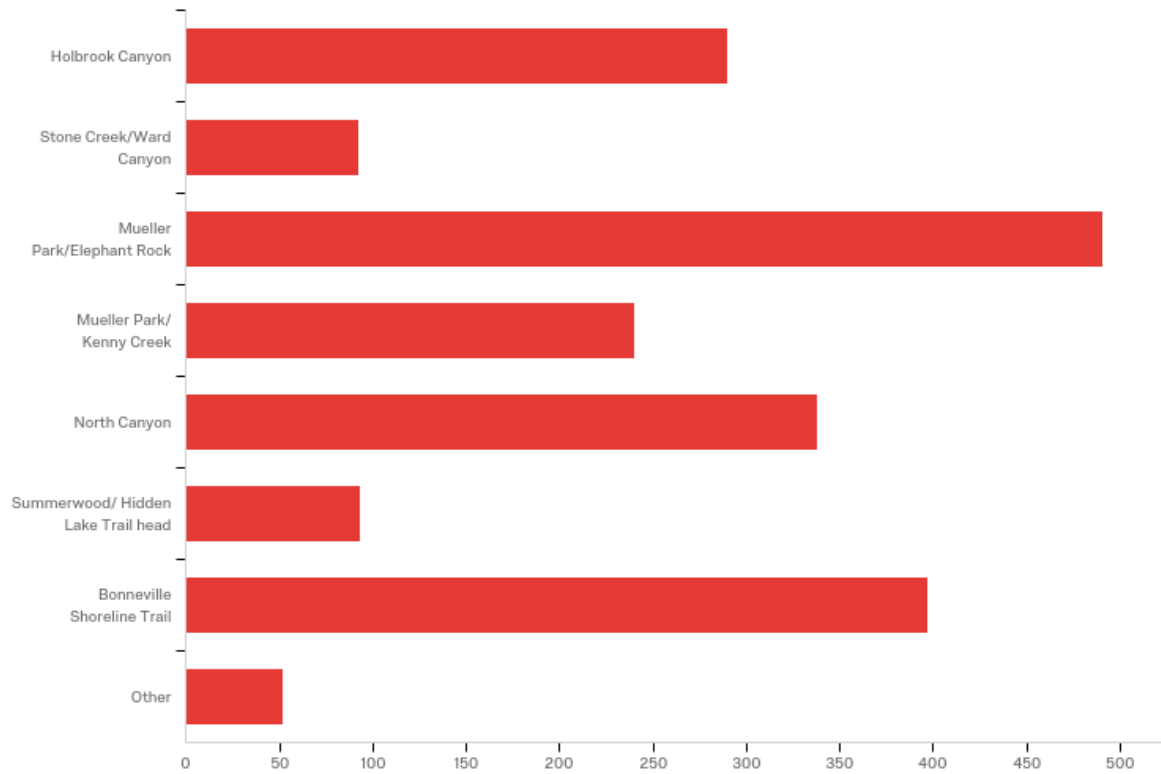
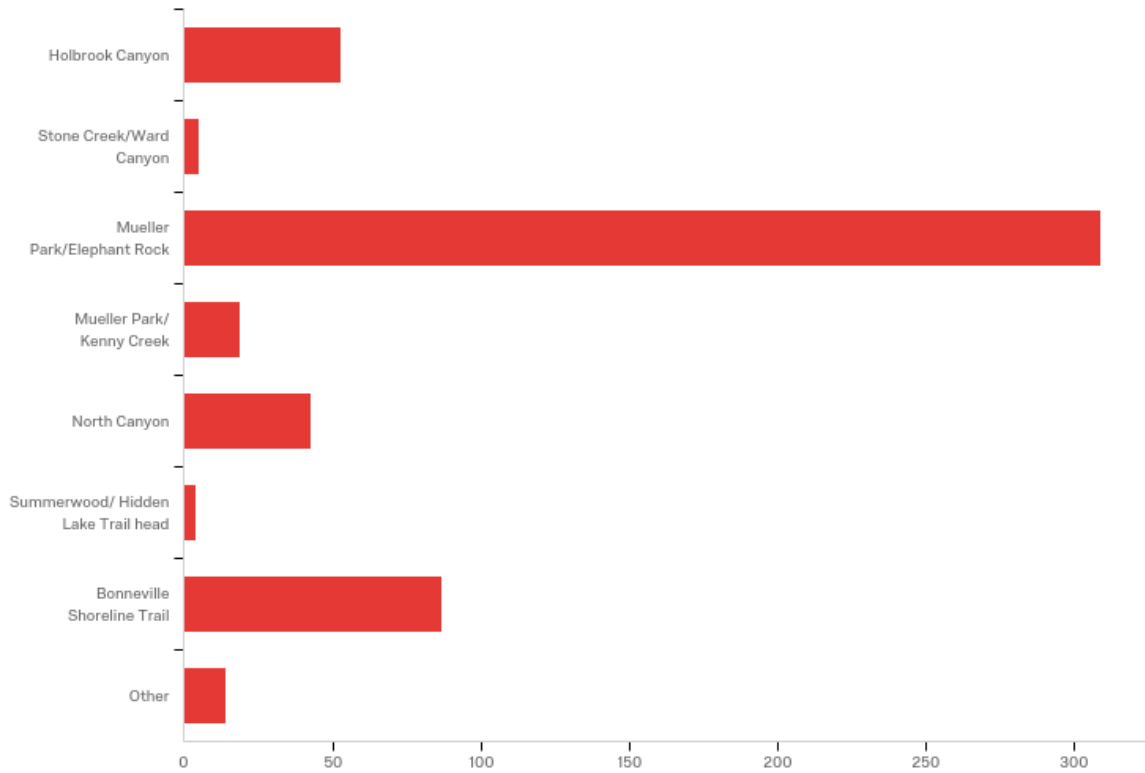


FIGURE 2.2.2 - COMMUNITY SURVEY QUESTIONNAIRE (CONT.)

Q6 - What trail facility do you use the most?



Q7 - If you don't currently use trails in Bountiful, what are some of the reasons? Please select all that apply.

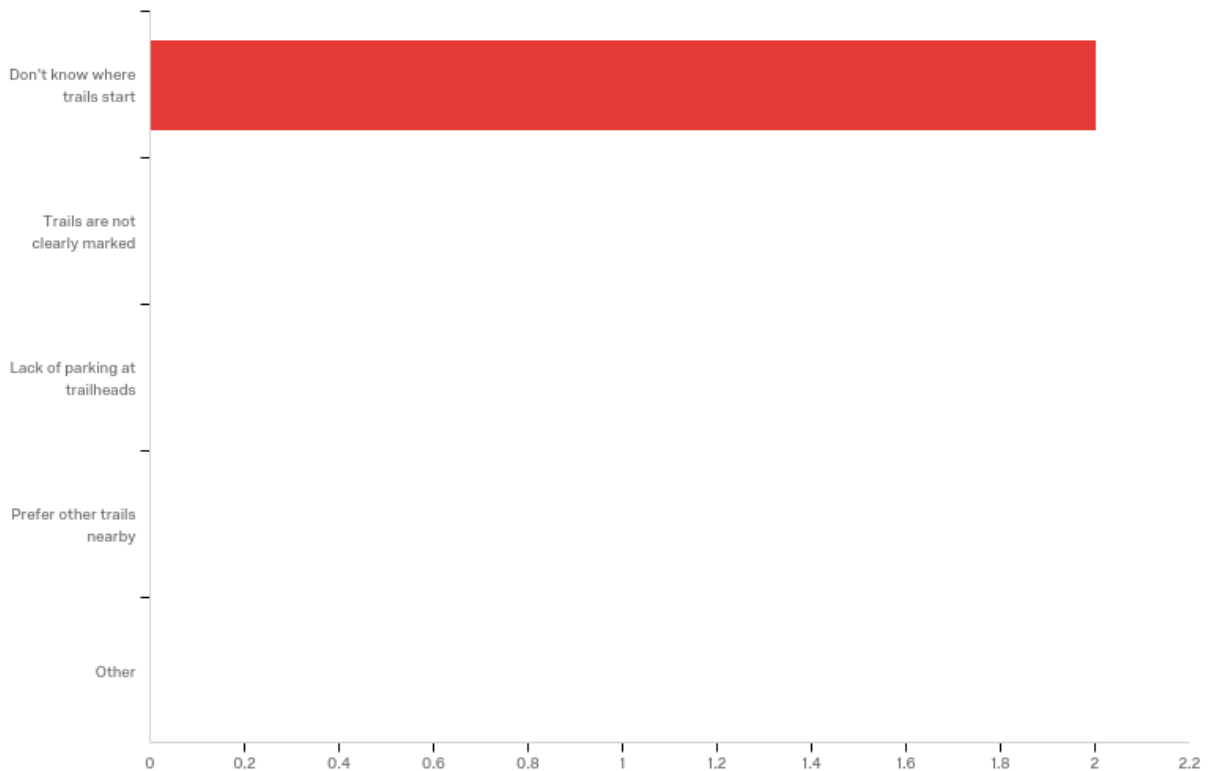
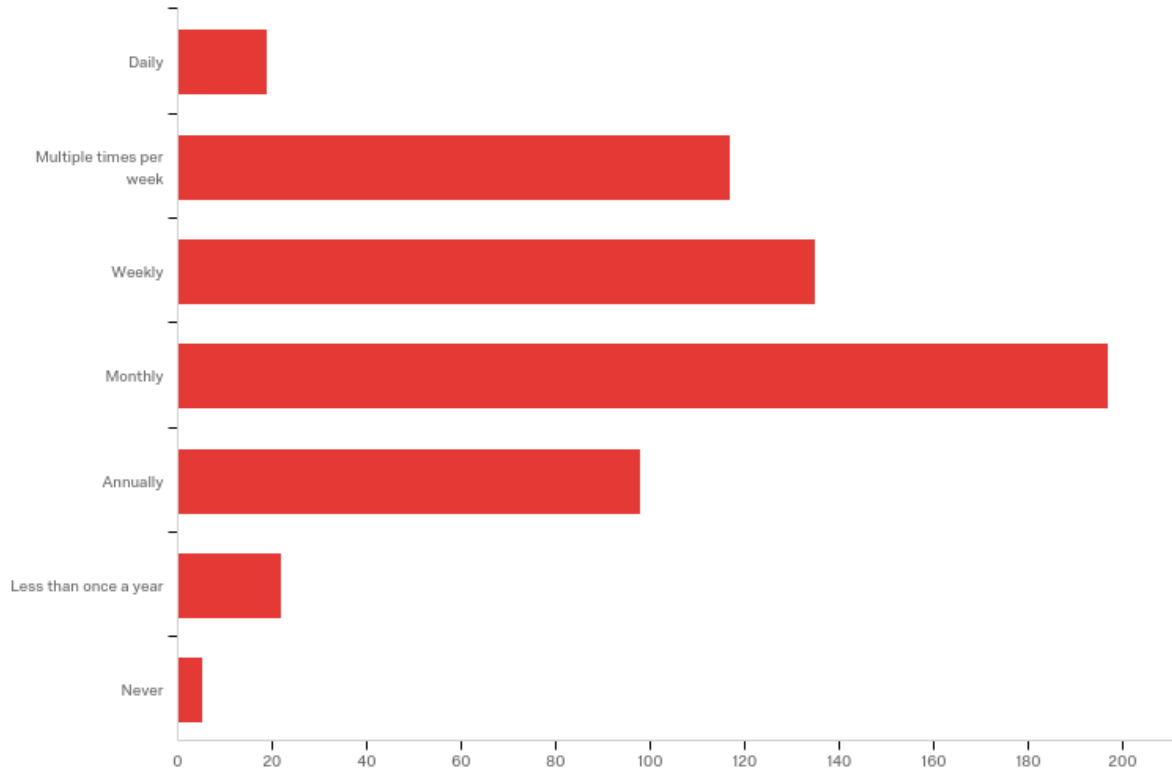


FIGURE 2.2.2 - COMMUNITY SURVEY QUESTIONNAIRE (CONT.)

Q8 - How frequently do you use Bountiful trails?



Q9 - How do you use the trails? Please select all that apply.

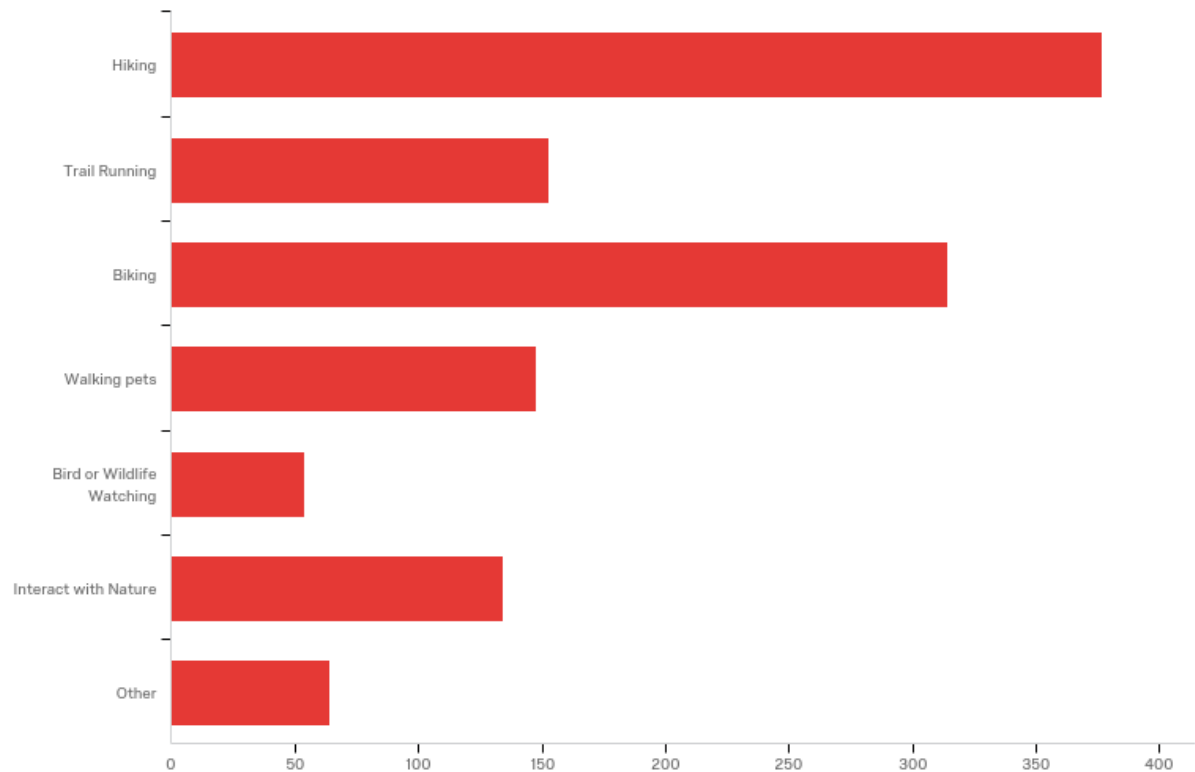
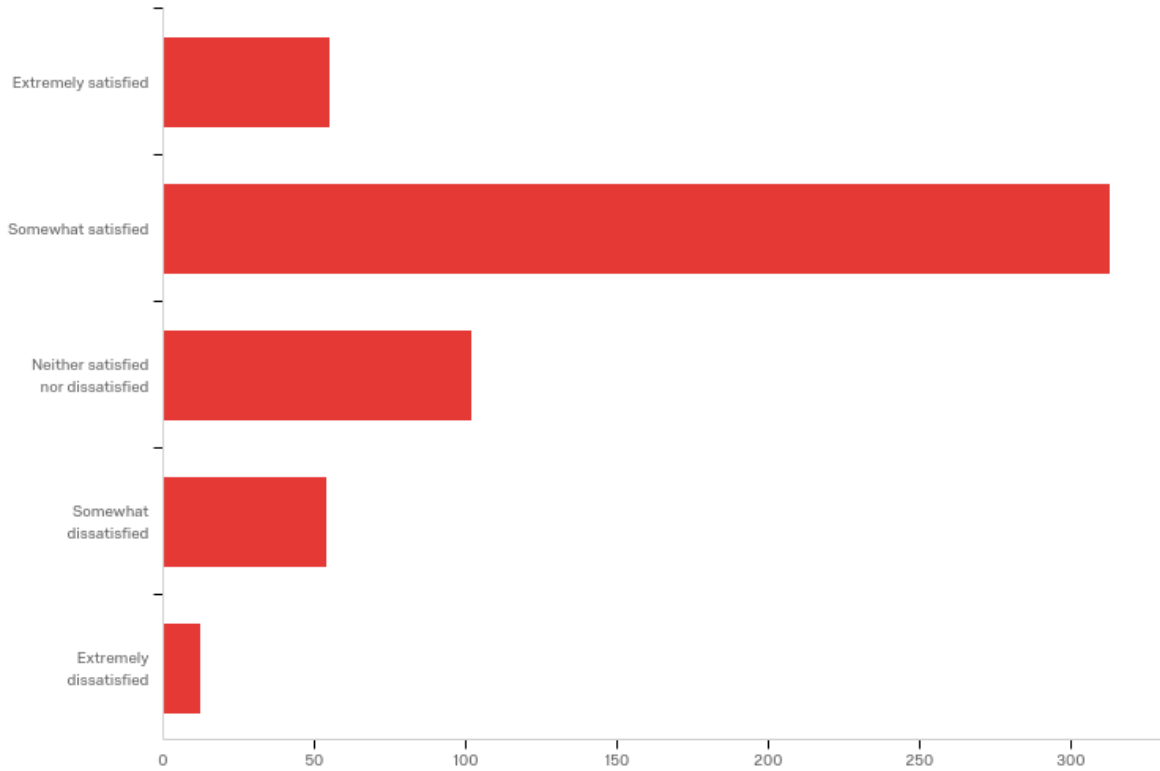


FIGURE 2.2.2 - COMMUNITY SURVEY QUESTIONNAIRE (CONT.)

Q10 - Are you satisfied with the trail system in Bountiful?



Q11 - Does Bountiful need more trails?

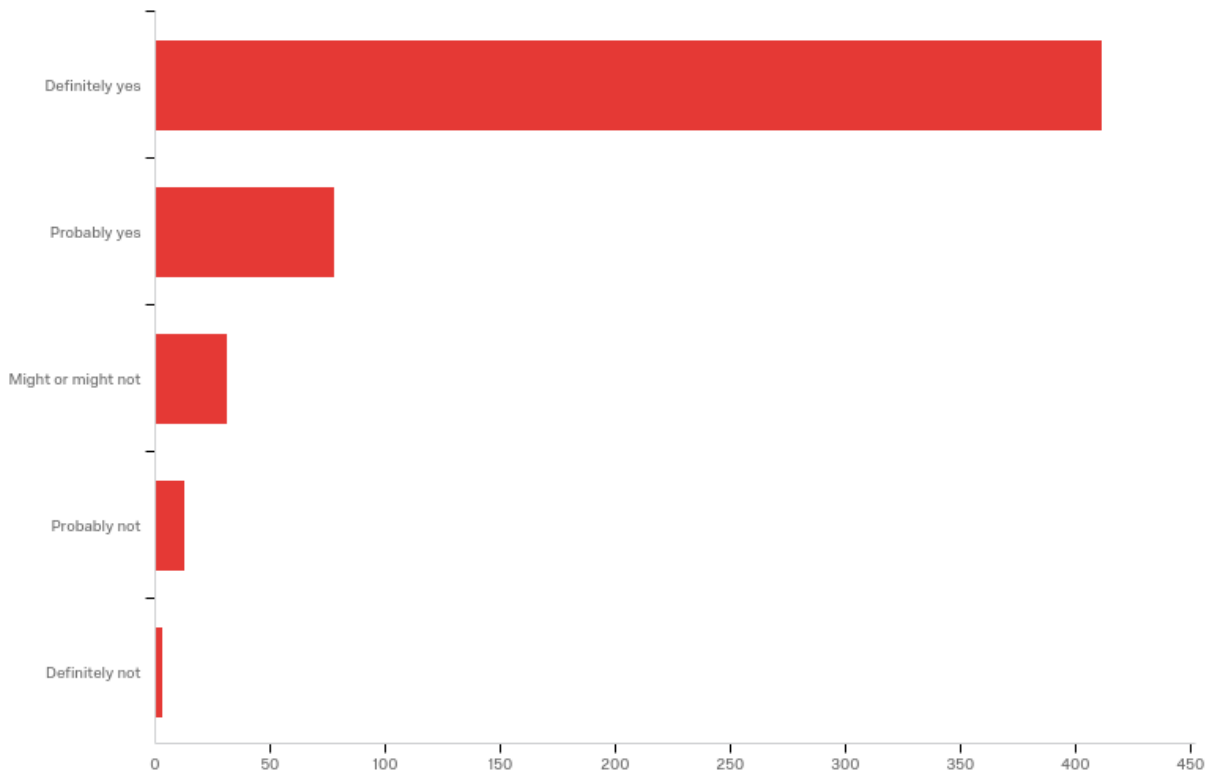
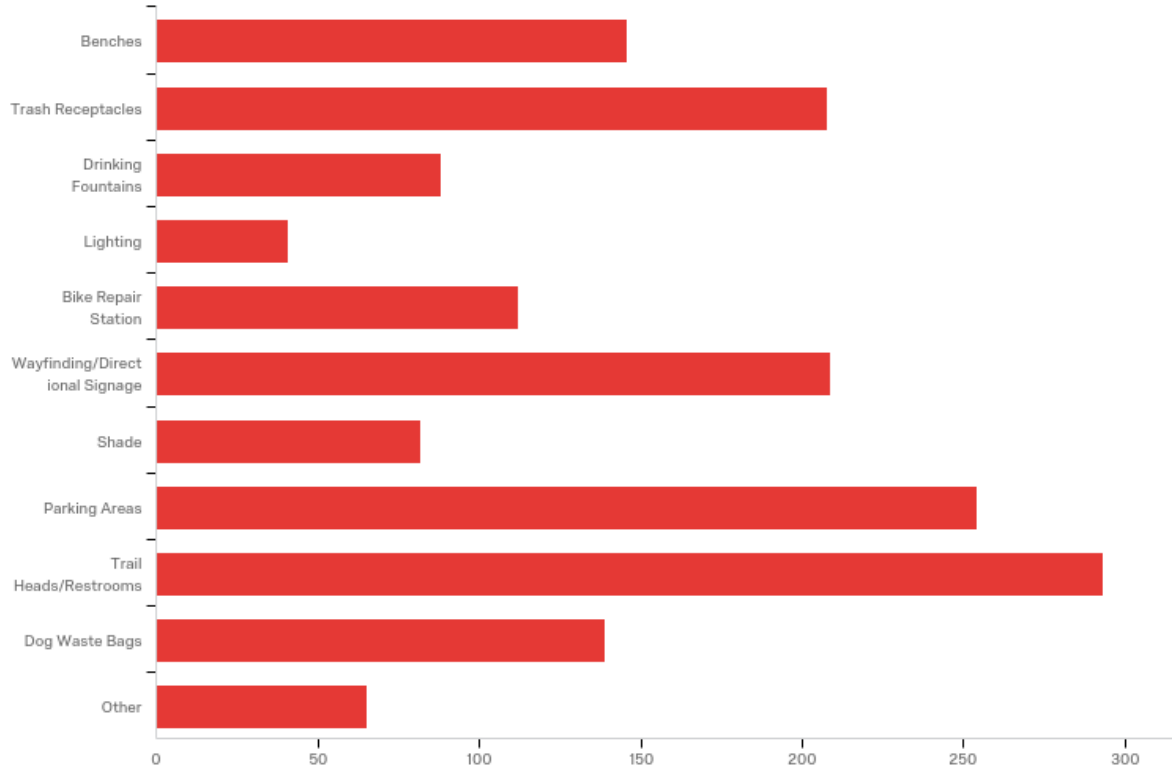


FIGURE 2.2.2 - COMMUNITY SURVEY QUESTIONNAIRE (CONT.)

Q12 - What kind of trail amenities would you like to see developed?

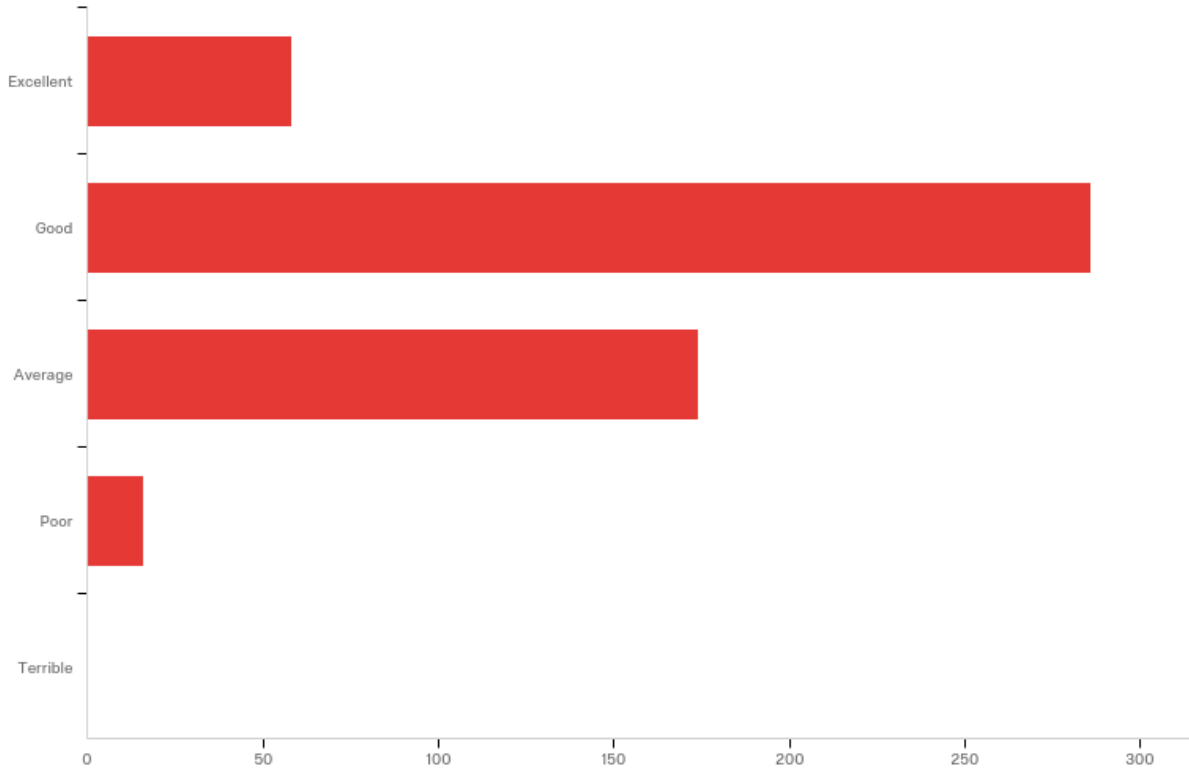


Q13 - What other trail projects would you like to see completed?

SEE APPENDIX

FIGURE 2.2.2 - COMMUNITY SURVEY QUESTIONNAIRE (CONT.)

Q14 - Rate the condition of Bountiful trails.



Q15 - Do you feel that Bountiful trails are safe?

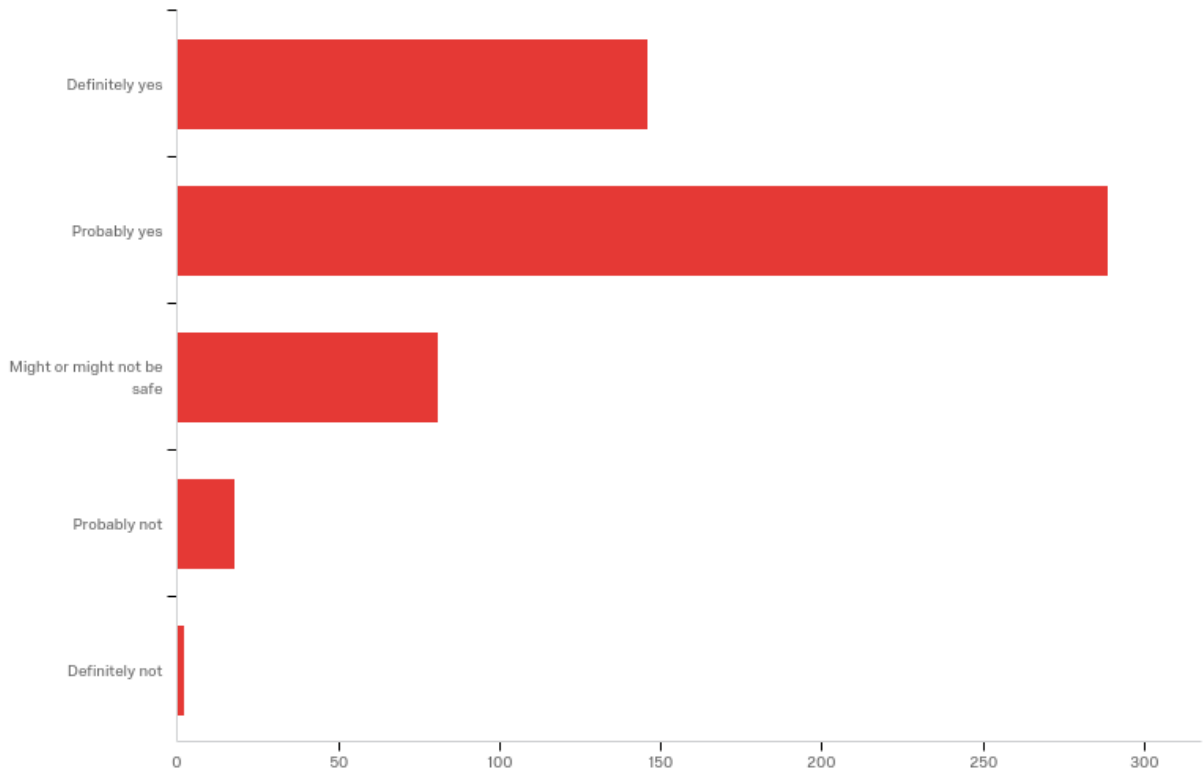
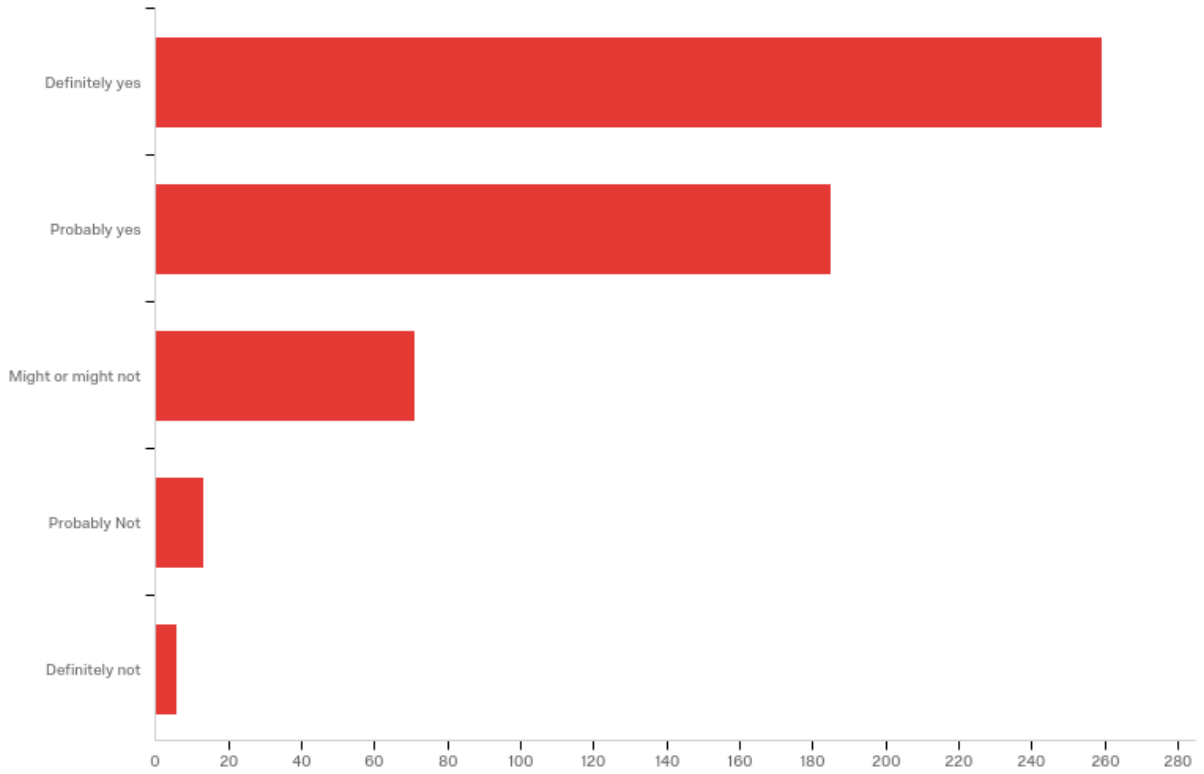


FIGURE 2.2.2 - COMMUNITY SURVEY QUESTIONNAIRE (CONT.)

Q16 - Do the Bountiful trails provide good access to the mountains and natural areas?



Q17 - Which of the following would you be willing to donate time or resources to in relation to trails?

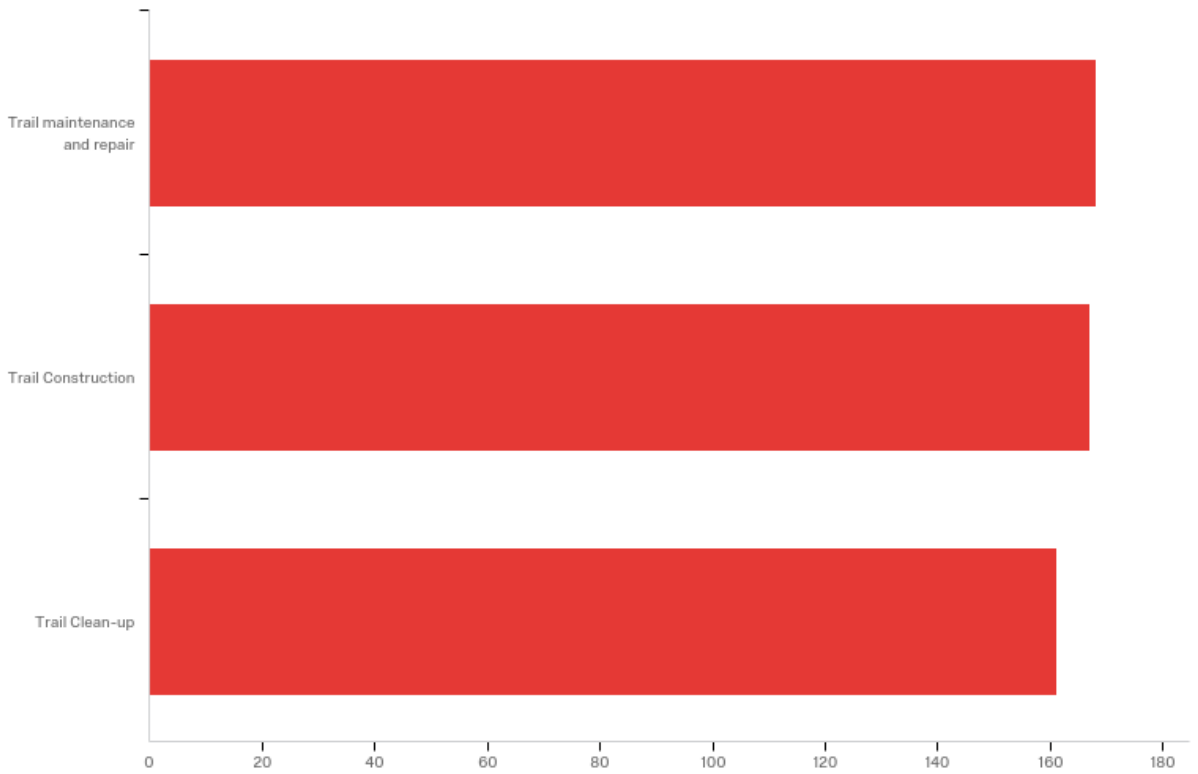


FIGURE 2.2.2 - COMMUNITY SURVEY QUESTIONNAIRE (CONT.)

Q18 - Is there anything else you would like to share related to Bountiful Trails and Pathways?

SEE APPENDIX

*Survey numbering note: For organizational purposes within this document, the numbering of the survey questions presented may not exactly match the numbering of the online survey. Presented answers and content have not been altered.

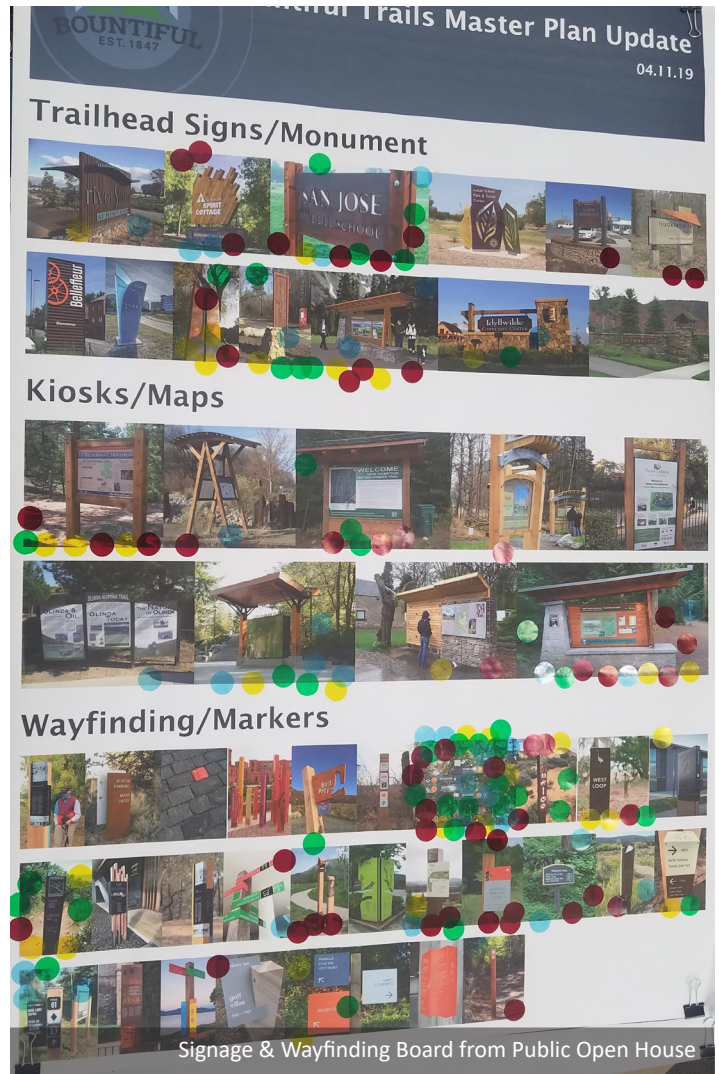
2.2.3 - PUBLIC OPEN HOUSE

To complete the needs assessment component of the master plan a public open house was held at City Hall on April 11, 2019. This open house was utilized to present the preliminary results of the Community Survey, preliminary Trails Master Plan map, preliminary Vision, Goals, and Objectives. In addition it was used to gather preferences on the type of signage and wayfinding desired, and gave additional opportunity to provide input.

General feedback/questions received included:

- Bountiful needs more trails
- Demand is exploding
- How will these projects be funded?
- When will these projects be completed?
- Trail users are willing to mobilize and help build and maintain trails

A preferred style for trailhead signs/kiosks and wayfinding/markers was also chosen. No additional input was given for the Vision, Goals, and Objectives.



THIS PAGE INTENTIONALLY LEFT BLANK



CHAPTER THREE | VISION, GOALS, AND OBJECTIVES

ANY GOOD MASTER PLAN NEEDS TO HAVE A CLEAR VISION WITH DEFINED AND ACHIEVABLE GOALS AND OBJECTIVES. THE GUIDING LANGUAGE IN THIS DOCUMENT WILL HELP ANSWER THE 'WHY' OF PLAN RECOMMENDATIONS.

3.1 - 2009 MASTER PLAN ISSUES AND GOALS

To not forget past issues, goals, and priorities, the Issues and Goals from the 2009 Recreation and Trails Master Plan that pertain to trails are summarized below. Many of these have been addressed and/or are reflected in the updated Vision, Goals, and Objectives. It is noted that the 2009 master plan addressed more than the specific recreation trail focus of the Trails Master Plan Update. Furthermore, some of these issues identified in 2009 are being addressed by other City documents and studies.

- ISSUE: There are not sufficient forms of transportation within the City.
GOAL: Increase bicycle routes and jogging trails by 50% within the next 10 years.
- ISSUE: New development has restricted and/or eliminated access to public lands located in the mountains above the City.
GOAL: Identify and preserve existing accesses
GOAL: Provide new accesses to areas that have been cut-off by development.
- ISSUE: There are a lot of unapproved user trails located on Forest Service property and on private property.
GOAL: Increase the number of approved, public trails.
- ISSUE: There is a trailhead at the top of North Canyon, but the only access is via an unimproved public roadway that runs across private property along the bottom of the canyon. Furthermore, at some point a section of the canyon was subdivided into many small parcels that have no access to public utilities and that are not legally developable under current Davis County Ordinances.
GOAL: Resolve the access and property ownership issues within the next 3 years.
- ISSUE: There is a growing demand for urban trails within the community.
GOAL: Establish an interconnecting urban trail system that links pedestrian friendly uses within the City such as parks, schools, regional trails, mass transit, Downtown, etc.
- ISSUE: There is a very limited amount of funds available for trails.
GOAL: Generate new revenue to pay for the acquisition of trails.
- ISSUE: Trails lack signage and other basic improvements.
GOAL: Have a trail map posted at every trailhead, and post trail markers every 1/8 mile.
GOAL: Bring all trails up to a minimum standard of improvement.
- ISSUE: Many existing user trails are located on private property and State Law does not allow the use of eminent domain to acquire trails and government can no longer require developers to install trails without compensating the developers for the exaction.
GOAL: Generate new revenue to pay for the acquisition of trails.

- **ISSUE:** The demand for access to public trails and public lands is increasing, and Bountiful City has installed a parking lot and restrooms at the mouth of Holbrook Canyon, however, a substantial portion of the Canyon is still held in private ownership.

GOAL: Acquire fee title and/or a trail easement for the entire length of Holbrook Canyon.

3.2 - VISION, GOALS, AND OBJECTIVES

The Vision, Goals, and Objectives of this Trails Master Plan update are based on public input and guidance from both the Trails Committee and City staff.

VISION:

Bountiful City will provide a comprehensive and diverse trail system that provides for and encourages healthy lifestyles, social engagement, and access to the natural environment.

GOALS & OBJECTIVES

- 1 | Provide year round recreational opportunities and trail access for hikers, bicyclists, equestrians, skiers, and other non-motorized users.
- 2 | Continue to develop and add to trail system to better accommodate existing and future use.
 - Creekside Trail
 - Holbrook Canyon Bridges
 - Holbrook Canyon Trail connection to Eggett Park including culvert
 - Holbrook Canyon Trail connection to Ward Canyon Trail
 - Mueller Park Downhill Trail
 - North Canyon Single Track Trail
 - North Canyon Trailhead
 - Twin Hollow (Cheese) Park Pump Track
 - Urban Bonneville Shoreline Trail (Bountiful Blvd. connection to Ward Canyon)
 - Ward Canyon Trail connection to Tolman (Rocket) Park
 - Ward Canyon Trail connection to Temple Ridge Trail
- 3 | Increase use of trail system through public outreach and education.
 - Public Meetings
 - Volunteer Projects
- 4 | Increase and promote community health and exercise.
 - City programs
 - South Davis Recreation District
 - Partner with existing trail user groups, such as trail runners, mountain bike organizations, etc. to promote trail use events.
- 5 | Integrate urban trail system with non-urban trail system to provide seamless access between the built and natural environments and provide trails that link key uses within the City.
 - Provide connections to natural trails to identified urban trail routes.
 - Connect parks, schools, transit, downtown, etc.
 - Use existing natural corridors, such as stream alignments to connect hillside trail network to lower areas of the City.
 - Private land vs. public access

6 | Provide trail connectivity to adjacent Cities and to regional trail systems.

- Connect to Bonneville Shoreline Trail.
- Connect to urban trail routes.

7 | Provide visible and easily understandable signage throughout the trail system to facilitate use, to promote wayfinding, and to interpret the surrounding environment.

- Develop and implement signage and wayfinding package.

8 | Maintain existing and future trails to support continued use and safety.

- Coordinate efforts of City crews and volunteers.
- Eliminate unapproved user created trails and revegetate.

9 | Provide budget to appropriately maintain the existing system and to continue to develop the system per the Trails Master Plan. In conjunction with the budget, actively seek private funding opportunities such as:

- Trail grants
- Private funding/donations
- Other

THIS PAGE INTENTIONALLY LEFT BLANK



CHAPTER FOUR | PROPOSED IMPROVEMENTS

CONSIDERING THE EXISTING TRAIL INVENTORY, THE NEEDS ASSESSMENT, AND ALL INPUT GATHERED FROM CITY STAFF, THE TRAILS COMMITTEE, AND THE PUBLIC, THIS CHAPTER PRESENTS RECOMMENDED ADDITIONS AND IMPROVEMENTS TO BOUNTIFUL’S RECREATIONAL TRAIL SYSTEM.

Bountiful Boulevard to at Holbrook Canyon, and multiple bridge crossings in Holbrook Canyon. A proposed trail inventory is included below summarizing the new trail additions ([Table 4.1](#)).

4.1 - TRAIL IMPROVEMENTS

Trails and shared use paths are an essential recreational and open space amenity as they have the opportunity to provide connectivity between key components of the built environment with natural systems and amenities. Additional trails were identified as one of the highest priorities in the Community Survey. The [Trails Master Plan \(Figure 1.2.1\)](#) identifies proposed trails and trail improvement projects to be built as part of this plan. In addition to new trails, these improvements also include a trailhead at North Canyon, a culvert crossing under

TABLE 4.1 - NEW TRAIL/PROJECT INVENTORY

NAME	TYPE	LENGTH (APPROX.)
Creekside Trail	Unpaved/Paved	4.62 miles
Holbrook Canyon Trail Bridges (2)*	Unpaved	n/a
Holbrook Canyon Trail to Eggett Park	Unpaved	0.20 miles
Holbrook Canyon Trail to Ward Canyon Trail (Meadow Loop Trail) (4)*	Unpaved	4.4 miles
Mueller Park Downhill Trail (3)*	Unpaved	2.0 miles
North Canyon Single Track Trail (1)*	Unpaved	1.1 miles
North Canyon Trailhead (5)*	Unpaved	n/a
Twin Hollow (Cheese) Park Pump Track	Unpaved	n/a
Urban Bonneville Shoreline Trail to Ward Canyon	Urban Extension	0.35 miles
Ward Canyon Trail to Tolman (Rocket) Park	Unpaved	0.67 miles
	Total =	13.34 miles

(#)* indicates project prioritization

4.2 - Trail Signage and Wayfinding

Numerous ideas, concepts, and imagery for proposed trails signage and wayfinding were reviewed with the Trails Committee. Imagery was also presented at the Public Open House to understand the public's preferences and desires. In the end, the selected direction was to provide signage and wayfinding that is simple, durable, sustainable along the trail system, and cost effective. A family of three different types of signs were created (*see Figures 1.2.2, 1.2.3, 1.2.4, and 1.2.5*): a prototypical trailhead monument sign/information kiosk; a directional/wayfinding marker that provides directional arrows and distances at key trail intersections and nodes; and carsonite trail markers that are placed consistently along trails that are durable, cost effective, and safe.

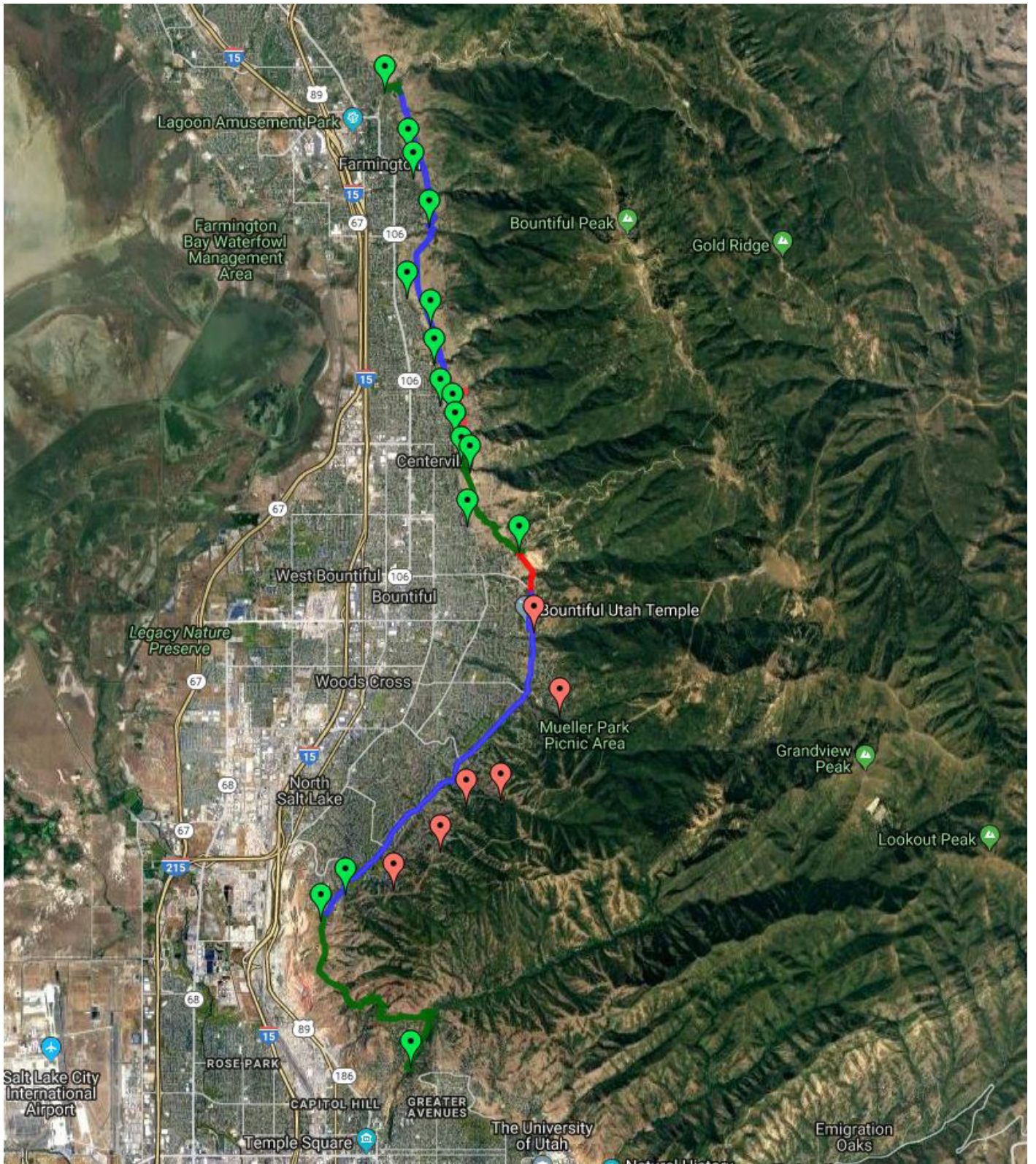
4.3 - Bonneville Shoreline Trail

A frequent comment from the community survey was to complete the Bonneville Shoreline Trail through Bountiful to provide better regional trail connectivity to other communities along the Wasatch Front. The alignment, design, and completion of the Bonneville Shoreline Trail, though segments of it run through Bountiful City, is a County managed project and is currently in the planning stage. The exact alignment as it runs through and adjacent to Bountiful is still to be determined.

The Bonneville Shoreline Trail is a concept that involves a pathway on the west slopes of the Wasatch Range on or

near the shoreline bench of ancient glacial Lake Bonneville in Cache, Box Elder, Weber, **Davis**, Salt Lake, and Utah Counties. The trail may eventually connect from the Idaho border to Juab County, a distance of over 150 miles (as the crow flies). More important than the distance of the trail is the size of the population served and the magnitude of recreational opportunity the trail provides. Placed near the Bonneville Bench, the trail skirts the developed areas of the Wasatch Front, often forming the boundary between urban subdivisions and National Forest wilderness. The Bonneville Shoreline Trail will provide a long distance regional hiking, biking, and equestrian trail at the back door of more than one million people and will be the trunk line of a branching regional system of trails linking city sidewalks to wilderness mountain tops (*see Figure 4.3 - Bonneville Shoreline Trail Farmington to Salt Lake*).

FIGURE 4.3 - BONNEVILLE SHORELINE TRAIL FARMINGTON TO SALT LAKE



THIS PAGE INTENTIONALLY LEFT BLANK



CHAPTER FIVE | PRELIMINARY COST ESTIMATES

RECOGNIZING THAT THE PROPOSED IMPROVEMENTS TO THE BOUNTIFUL TRAIL SYSTEM REQUIRE FUNDING, THIS CHAPTER PRESENTS PRELIMINARY CONSTRUCTION COST ESTIMATES FOR EACH OF THE IDENTIFIED PROJECTS FOR FUNDRAISING AND BUDGETING PURPOSES.

5.1 - PRELIMINARY COST ESTIMATES

The proposed improvements to the Bountiful recreational trails system vary from very small projects that may be performed primarily by volunteer help and/or City staff (Holbrook Canyon Bridges) to more costly and extensive improvements that will require significant grading and construction (Creekside Trail). Preliminary construction cost estimates have been provided for each of the proposed projects ([Table 5.1](#)). These estimates are based on current industry pricing, recent similar projects, consulting with reputable contractors, and rough quantity takeoffs from the schematic layouts included in this master plan. It is noted that these estimates do not reflect detailed design of these projects and that depending on the timing of bidding and installation pricing will undoubtedly increase due to inflation, bidding environment, and material costs.

TABLE 5.1 - PRELIMINARY COST ESTIMATES

Creekside Trail						
1	MOBILIZATION / DEMOBILIZATION	1	L.S.	\$ 104,000.00	\$	104,000.00
2	10' ASPHALT TRAIL (including clear/grub, grading, base, etc.)	15,840	L.F.	\$ 75.00	\$	1,188,000.00
3	CONCRETE TRAIL (including demo, grading, base, etc.)	63,360	S.F.	\$ 12.50	\$	792,000.00
4	MISC. (signage, furniture, etc.)	1	L.S.	\$ 100,000.00	\$	100,000.00
5	DESIGN & SURVEY	1	L.S.	\$ 208,000.00	\$	208,000.00
				Subtotal	\$	2,392,000.00
Holbrook Canyon Bridges						
1	MOBILIZATION / DEMOBILIZATION	1	L.S.	\$ 2,375.00	\$	2,375.00
2	WOODEN BRIDGES	5	EA.	\$ 7,500.00	\$	37,500.00
3	MISC. (signage, furniture, etc.)	1	L.S.	\$ 10,000.00	\$	10,000.00
4	DESIGN & SURVEY	1	L.S.	\$ 4,750.00	\$	4,750.00
				Subtotal	\$	54,625.00
Egget Park Trail from Holbrook Canyon						
1	MOBILIZATION / DEMOBILIZATION	1	L.S.	\$ 42,601.25	\$	42,601.25
2	BOX CULVERT	300	L.F.	\$ 2,500.00	\$	750,000.00
3	10' ASPHALT TRAIL (including clear/grub, grading, base, etc.)	1,027	L.F.	\$ 75.00	\$	77,025.00
4	MISC. (signage, furniture, etc.)	1	L.S.	\$ 25,000.00	\$	25,000.00
5	DESIGN & SURVEY	1	L.S.	\$ 85,202.50	\$	85,202.50
				Subtotal	\$	979,828.75
Holbrook to Ward Canyon						
1	MOBILIZATION / DEMOBILIZATION	1	L.S.	\$ 11,212.00	\$	11,212.00
2	4' NATURAL TRAIL	23,232	L.F.	\$ 7.50	\$	174,240.00
3	MISC. (signage, furniture, etc.)	1	L.S.	\$ 50,000.00	\$	50,000.00
4	DESIGN & SURVEY	1	L.S.	\$ 22,424.00	\$	22,424.00
				Subtotal	\$	257,876.00
Mueller Park Downhill Trail						
1	MOBILIZATION / DEMOBILIZATION	1	L.S.	\$ 4,960.00	\$	4,960.00
2	4' NATURAL TRAIL	10,560	L.F.	\$ 7.50	\$	79,200.00
3	MISC. (signage, furniture, etc.)	1	L.S.	\$ 20,000.00	\$	20,000.00
4	DESIGN & SURVEY	1	L.S.	\$ 9,920.00	\$	9,920.00
				Subtotal	\$	114,080.00
North Canyon Single Track						
1	MOBILIZATION / DEMOBILIZATION	1	L.S.	\$ 3,178.00	\$	3,178.00
2	4' NATURAL TRAIL	5,808	L.F.	\$ 7.50	\$	43,560.00
3	MISC. (signage, furniture, etc.)	1	L.S.	\$ 20,000.00	\$	20,000.00
4	DESIGN & SURVEY	1	L.S.	\$ 6,673.80	\$	6,673.80
				Subtotal	\$	73,411.80
North Canyon Trailhead						
1	MOBILIZATION / DEMOBILIZATION	1	L.S.	\$ 12,470.00	\$	12,470.00
2	ASPHALT PARKING	7,500	S.F.	\$ 12.50	\$	93,750.00
3	CURB AND GUTTER	590	L.F.	\$ 35.00	\$	20,650.00
4	CXT RESTROOM (dry)	1	L.S.	\$ 75,000.00	\$	75,000.00
5	RETAINING WALL	200	S.F.	\$ 50.00	\$	10,000.00
6	MISC. (signage, fencing, furniture, etc.)	1	L.S.	\$ 50,000.00	\$	50,000.00
7	DESIGN & SURVEY	1	L.S.	\$ 24,940.00	\$	24,940.00
				Subtotal	\$	286,810.00
Twin Hollow (Cheese) Park Pump Track						
1	MOBILIZATION / DEMOBILIZATION	1	L.S.	\$ 6,000.00	\$	6,000.00
2	PUMP TRACK (including material, grading, building)	1	L.S.	\$ 100,000.00	\$	100,000.00
3	MISC. (signage, furniture, etc.)	1	L.S.	\$ 20,000.00	\$	20,000.00
4	DESIGN & SURVEY	1	L.S.	\$ 12,000.00	\$	12,000.00
				Subtotal	\$	138,000.00
Urban Bonneville Shoreline Trail to Ward Canyon						
1	MOBILIZATION / DEMOBILIZATION	1	L.S.	\$ 7,825.00	\$	7,825.00
2	10' ASPHALT TRAIL (including clear/grub, grading, base, etc.)	1,820	L.F.	\$ 75.00	\$	136,500.00
3	MISC. (signage, furniture, etc.)	1	L.S.	\$ 20,000.00	\$	20,000.00
4	DESIGN & SURVEY	1	L.S.	\$ 15,650.00	\$	15,650.00
				Subtotal	\$	179,975.00
Ward Canyon Trail to Rocket Park						
1	MOBILIZATION / DEMOBILIZATION	1	L.S.	\$ 5,187.50	\$	5,187.50
2	4' NATURAL TRAIL	2,500	L.F.	\$ 7.50	\$	18,750.00
3	CONCRETE TRAIL (including demo, grading, base, etc.)	5,200	S.F.	\$ 12.50	\$	65,000.00
4	MISC. (signage, furniture, etc.)	1	L.S.	\$ 20,000.00	\$	20,000.00
5	DESIGN & SURVEY	1	L.S.	\$ 10,375.00	\$	10,375.00
				Subtotal	\$	119,312.50
					Cumulative Subtotal	\$ 4,457,919.05
					15% Contingency	\$ 668,687.86
					TOTAL ESTIMATED COST	\$ 5,126,606.91

*NOTE: PRELIMINARY COST ESTIMATES DO NOT INCLUDE LAND ACQUISITION COSTS.

THIS PAGE INTENTIONALLY LEFT BLANK



blu line designs

planning | landscape architecture | urban design

8719 S. Sandy Parkway
Sandy Utah 84070

phone : 801.703.6383